



Part Number : [936010093](#)

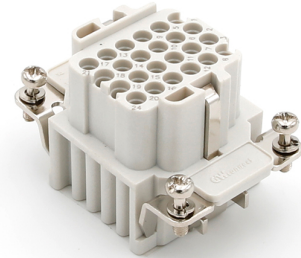
Product Description : GWconnect Crimp Contact Insert, Female, 24-Pole, 10A, for Double Contacts, Size 6B «44x27»

Series Number : 93601

Status : Active

Product Category : Heavy-Duty Connectors

Engineering Number : 7124.4040.0



---

## Product Environment Compliance

### Compliance

GADSL/IMDS	Not Relevant
China RoHS	
EU ELV	Not Relevant
Low-Halogen Status	Low-Halogen per IEC 61249-2-21
REACH SVHC	Not Contained per D(2023)8585-DC (23 Jan 2024)
EU RoHS	Compliant per EU 2015/863

### Multiple Part Product Compliance Statements

- Eu RoHS
- REACH SVHC
- Low-Halogen

### Multiple Part Industry Compliance Documents

- IPC 1752A Class C
- IPC 1752A Class D
- Molex Product Compliance Declaration
- IEC-62474
- chemSHERPA (xml)

### EU RoHS Certificate of Compliance

---

## Part Details

## General

Status	Active
Category	Heavy-Duty Connectors
Series	93601
Description	GWconnect Crimp Contact Insert, Female, 24-Pole, 10A, for Double Contacts, Size 6B «44x27»
Component Type	Inserts - Crimp Contact
Insert Series	S-DD
Product Name	GWconnect
Standard	CSA C22.2 NO. 182.3, EN 60664-1, EN 61984, UL 1977
UPC	887191870113

## Agency

CSA	256883
UL	E249674

## Electrical

Current - Maximum per Contact	10.0A
Voltage - Maximum	250V

## Physical

Component Size	6B «44x27»
Durability (mating cycles max)	500
Gender	Female
Insert Color	Grey
Material - Insert	Polycarbonate
Net Weight	41.000/g
Number of Rows	6
Packaging Type	Bag
Polarized to Mating Part	Yes
Poles	24
Temperature Range - Operating	-40° to +125°C

---

## Mates With / Use With

### Mates with Part(s)

Description	Part Number
GWconnect Crimp Contact Insert, Male, 24-Pole, 10A, for Turned Crimp Contacts, Size 6B «44x27»	<u>936010094</u>

### Use with Part(s)

Description	Part Number
Use With	Turned Contacts - Female