



Part Number : [936010315](#)

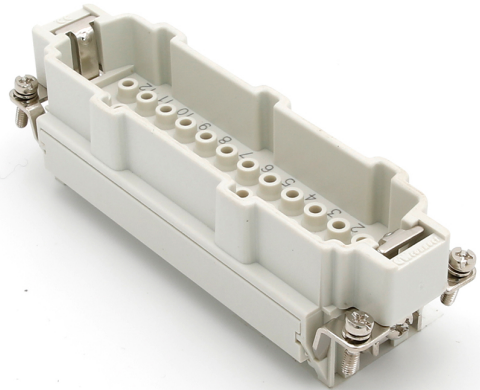
Product Description : GWconnect Crimp Contact Insert, Male, 24-Pole, 16A, Numbered 1-24, for Crimp Contacts, Size 24B «104x27»

Series Number : 93601

Status : Active

Product Category : Heavy-Duty Connectors

Engineering Number : 7324.6165.0



---

## Documents & Resources


### Drawings

[936010315\\_sd.pdf](#)

---

## Product Environment Compliance

### Compliance

GADSL/IMDS	Not Relevant
China RoHS	
EU ELV	Not Relevant
Low-Halogen Status	Not Reviewed per IEC 61249-2-21
REACH SVHC	Not Contained per D(2023)3788-DC (14 Jun 2023)
EU RoHS	Compliant per EU 2015/863

### Multiple Part Product Compliance Statements

- Eu RoHS
- REACH SVHC
- Low-Halogen

### Multiple Part Industry Compliance Documents

- IPC 1752A Class C
- IPC 1752A Class D
- Molex Product Compliance Declaration
- IEC-62474

## Part Details

### General

Status	Active
Category	Heavy-Duty Connectors
Series	93601
Description	GWconnect Crimp Contact Insert, Male, 24-Pole, 16A, Numbered 1-24, for Crimp Contacts, Size 24B «104x27»
Component Type	Inserts - Crimp Contact
Insert Series	S-EC
Product Name	GWconnect
Standard	CSA C22.2 NO. 182.3, EN 60664-1, EN 61984, UL 1977
UPC	887191883137

### Agency

CSA	256883
UL	E249674

### Electrical

Current - Maximum per Contact	16.0A
Voltage - Maximum	500V

### Physical

Component Size	24B «104X27»
Durability (mating cycles max)	700
Gender	Male
Insert Color	Grey
Material - Insert	Polycarbonate
Number of Rows	2
Packaging Type	Bag
Polarized to Mating Part	Yes

Poles	24
Temperature Range - Operating	-40° to +125°C

---

## Mates With / Use With

### Mates with Part(s)

Description	Part Number
GWconnect Crimp Contact Insert, Female, 24-Pole, 16A, Numbered 1-24, for Crimp Contacts, Size 24B «104x27»	<u>936010305</u>

### Use with Part(s)

Description	Part Number
Use With	Turned Contacts - Male

---