



**Part Number :** [936010402](#)

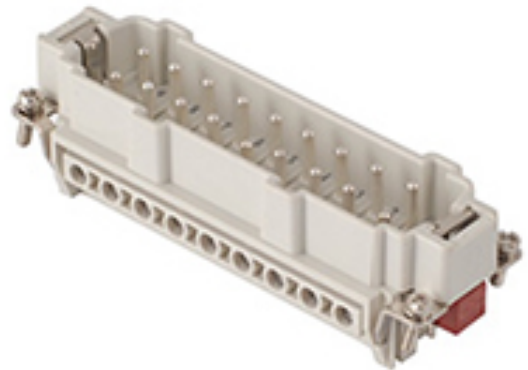
**Product Description :** GWconnect Screw Terminal Insert, Male, 18-Pole, 16A, Silver (Ag) Plated Contacts, Numbered 1-16, A, and B, with Wire Protection, Size 24B «104x27»

**Series Number :** 93601

**Status :** Active

**Product Category :** Heavy-Duty Connectors


**Engineering Number :** 7516.6134.0



---

## Product Environment Compliance

### Compliance

GADSL/IMDS	Not Relevant
China RoHS	
EU ELV	Not Relevant
Low-Halogen Status	Not Reviewed per IEC 61249-2-21
REACH SVHC	Not Contained per ED/71/2019 (16 July 2019)
EU RoHS	Compliant with Exemption 6(c) per EU 2015/863

### Multiple Part Product Compliance Statements

- Eu RoHS
- REACH SVHC
- Low-Halogen

### Multiple Part Industry Compliance Documents

- IPC 1752A Class C
- IPC 1752A Class D
- Molex Product Compliance Declaration
- IEC-62474
- chemSHERPA (xml)

### EU RoHS Certificate of Compliance

---

## Part Details

### General

Status	Active
Category	Heavy-Duty Connectors
Series	93601
Description	GWconnect Screw Terminal Insert, Male, 18-Pole, 16A, Silver (Ag) Plated Contacts, Numbered 1-16, A, and B, with Wire Protection, Size 24B «104x27»
Component Type	Inserts - Screw Terminal Block
Insert Series	S-EHV
Product Name	GWconnect
Standard	CSA C22.2 NO. 182.3, EN 60664-1, EN 61984, UL 1977
UPC	887191888101

#### Agency

CSA	256883
UL	E249674

#### Electrical

Current - Maximum per Contact	16.0A
Voltage - Maximum	830V

#### Physical

Component Size	24B «104X27»
Durability (mating cycles max)	500
Gender	Male
Insert Color	Grey
Material - Contact	Copper Alloy
Material - Insert	Polycarbonate
Material - Plating	Silver
Net Weight	99.000/g
Number of Rows	2
Packaging Type	Bag
Polarized to Mating Part	Yes
Poles	18
Stripping Length	7.00mm

Temperature Range - Operating	-40° to +125°C
Tightening Test Torque	0.50 Nm
Wire Size (AWG)	14-20
Wire Size mm <sup>2</sup>	0.50-2.50

---

## Mates With / Use With

### Mates with Part(s)

Description	Part Number
GWconnect Screw Terminal Insert, Female, 18-Pole, 16A, Silver (Ag) Plated Contacts, Numbered 1-16, A, and B, with Wire Protection, Size 24B «104x27»	<u>936010398</u>

### Use with Part(s)

Description	Part Number
Use With	Size 24B «104x27» Hoods and Housings