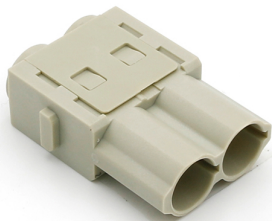




Part Number : [936010509](#)
Product Description : GWconnect Crimp
Contact Power Module, Male, 2-Pole, 70A, for
Crimp Contacts, Grey
Series Number : 93601
Status : Active
Product Category : Heavy-Duty Connectors
Engineering Number : 7702.3182.0



Documents & Resources

Drawings
[936010509_sd.pdf](#)

Product Environment Compliance

Compliance

GADSL/IMDS	Not Relevant
China RoHS	
EU ELV	Compliant per 2000/53/EC
Low-Halogen Status	Low-Halogen per IEC 61249-2-21
REACH SVHC	Not Contained per D(2024)7663-DC (21 Jan 2025)
EU RoHS	Compliant per EU 2015/863

Multiple Part Product Compliance Statements

- Eu RoHS
- REACH SVHC
- Low-Halogen

Multiple Part Industry Compliance Documents

- IPC 1752A Class C
- IPC 1752A Class D
- Molex Product Compliance Declaration
- IEC-62474

Part Details

General

Status	Active
Category	Heavy-Duty Connectors
Series	93601
Description	GWconnect Crimp Contact Power Module, Male, 2-Pole, 70A, for Crimp Contacts, Grey
Component Type	Power Module
Product Name	GWconnect
UPC	887191825854

Agency

UL	E249674
----	---------

Electrical

Current - Maximum per Contact	70.0A
Voltage - Maximum	1000V

Physical

Color - Resin	Gray
Durability (mating cycles max)	500
Gender	Male
Material - Housing	Polycarbonate
Net Weight	9.000/g
Packaging Type	Bag
Polarized to Mating Part	Yes
Poles	2
Temperature Range - Operating	-40° to +125°C

Mates With / Use With

Mates with Part(s)

Description	Part Number
GWconnect Crimp Contact Power Module, Female, 2-Pole, 70A, for Crimp Contacts, Grey	<u>936010508</u>

Use with Part(s)

Description	Part Number
Use With	70.0A Turned Male Crimp Contacts

This document was generated on Mar 27, 2025