



**Part Number :** [936010515](#)

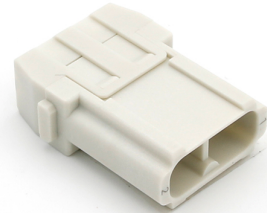
**Product Description :** GWconnect Crimp Contact Power Module, Female, 2-Pole, 40A, for Crimp Contacts, Grey

**Series Number :** 93601

**Status :** Active

**Product Category :** Heavy-Duty Connectors

**Engineering Number :** 7702.3242.0



---

## Product Environment Compliance

### Compliance

GADSL/IMDS	Not Relevant
China RoHS	Not Reviewed per SJ/T 11365-2006
EU ELV	Not Relevant
Low-Halogen Status	Not Reviewed per IEC 61249-2-21
REACH SVHC	Not Reviewed per D(2024)7663-DC (21 Jan 2025)
EU RoHS	Not Reviewed per EU 2015/863

### Multiple Part Product Compliance Statements

- Eu RoHS
- REACH SVHC
- Low-Halogen

### Multiple Part Industry Compliance Documents

- IPC 1752A Class C
- IPC 1752A Class D
- Molex Product Compliance Declaration
- IEC-62474
- chemSHERPA (xml)

### EU RoHS Certificate of Compliance

---

## Part Details

## General

Status	Active
Category	Heavy-Duty Connectors
Series	93601
Description	GWconnect Crimp Contact Power Module, Female, 2-Pole, 40A, for Crimp Contacts, Grey
Component Type	Power Module
Product Name	GWconnect
UPC	887191827032

## Agency

UL	E249674
----	---------

## Electrical

Current - Maximum per Contact	40.0A
Voltage - Maximum	1000V

## Physical

Color - Resin	Gray
Durability (mating cycles max)	500
Gender	Male
Material - Housing	Polycarbonate
Net Weight	11.100/g
Packaging Type	Bag
Polarized to Mating Part	Yes
Poles	2
Temperature Range - Operating	-40° to +125°C

---

## Mates With / Use With

### Mates with Part(s)

Description	Part Number
GWconnect Crimp Contact Power Module, Female, 2-Pole, 40A, for Crimp Contacts, Grey	<u>936010514</u>

Use with Part(s)

Description	Part Number
Use With	40.0A Turned Male Crimp Contacts

---

This document was generated on Mar 27, 2025