



Part Number : [936040068](#)

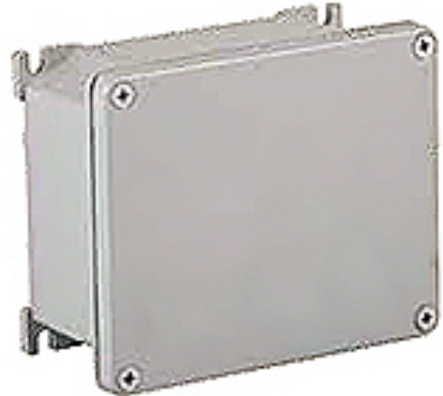
Product Description : GWconnect Enclosure, Die-cast Aluminum, S-8000 Series, with External Mounting Flanges, 139 x 114 x 62mm Outside Dimensions, Grey RAL 7037

Series Number : 93604

Status : Active


Product Category : Die-cast Enclosures

Engineering Number : 8000.6292.0



Product Environment Compliance

Compliance

GADSL/IMDS	Not Relevant
China RoHS	
EU ELV	Not Relevant
Low-Halogen Status	Not Reviewed per IEC 61249-2-21
REACH SVHC	Not Contained per D(2022)9120-DC (17 Jan 2023)
EU RoHS	Compliant per EU 2015/863

Multiple Part Product Compliance Statements

- Eu RoHS
- REACH SVHC
- Low-Halogen

Multiple Part Industry Compliance Documents

- IPC 1752A Class C
- IPC 1752A Class D
- Molex Product Compliance Declaration
- IEC-62474
- chemSHERPA (xml)

EU RoHS Certificate of Compliance

Part Details

General

Status	Active
--------	--------

Category	Die-cast Enclosures
Series	93604
Description	GWconnect Enclosure, Die-cast Aluminum, S-8000 Series, with External Mounting Flanges, 139 x 114 x 62mm Outside Dimensions, Grey RAL 7037
IP Rating	IP66
Product Name	GWconnect
Standard	ANSI/UL 50, ANSI/UL 50 E, CSA C22.2 No.94-1-2, EN 60670-1, EN 62208, EN-60670-22, NMX-J235/1-2
Type	ATEX
UPC	887191871431

Physical

Enclosure Coating	Polyester Powder
Enclosure Color	Grey RAL 7037
Internal Dimensions	128 x 103 x 55mm
Material - Enclosure	Die-cast Aluminum
Mounting Style	External Flanges
Net Weight	441.000/g
Outside Dimensions	139 x 114 x 62mm
Packaging Type	Carton
Temperature Range - Operating	-20° to +85°C

Use with Part(s)

Description	Part Number
Use With	DIN-rails, mounting supports, fixing screws, metal plates, and ground terminals