



Part Number : [1202530326](#)

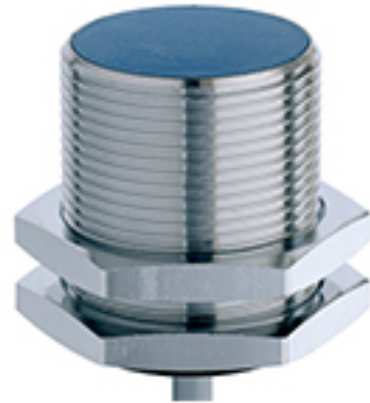
Product Description : Contrinex Inductive Sensor, M30 Housing, 10mm Operating Distance, Embeddable, NPN, NO, 2m 3-wire PVC Cable, 35mm Housing Length

Series Number : 120253

Status : Active

Product Category : Inductive and Photoelectric Sensors

Engineering Number : DW-AD-601-M30-120



Documents & Resources

Specifications

[1202530326-000.pdf](#)

Product Environment Compliance

Compliance

GADSL/IMDS	Not Relevant
China RoHS	
EU ELV	Not Relevant
Low-Halogen Status	Not Reviewed per IEC 61249-2-21
REACH SVHC	Not Reviewed per D(2024)7663-DC (21 Jan 2025)
EU RoHS	Compliant with Exemption 6(c) per EU 2015/863

Multiple Part Product Compliance Statements

- Eu RoHS
- REACH SVHC
- Low-Halogen

Multiple Part Industry Compliance Documents

- IPC 1752A Class C
- IPC 1752A Class D
- Molex Product Compliance Declaration
- IEC-62474
- chemSHERPA (xml)

Part Details

General

Status	Active
Category	Inductive and Photoelectric Sensors
Series	120253
Description	Contrinex Inductive Sensor, M30 Housing, 10mm Operating Distance, Embeddable, NPN, NO, 2m 3-wire PVC Cable, 35mm Housing Length
IP Rating	IP67
Product Name	Contrinex
Type	Inductive
UPC	191130065011

Electrical

Output	NO
Polarity	NPN
Switching Frequency	≤ 1200 Hz

Physical

Connection	Cable (PVC 2m, 3-wire)
Length	35mm
Material - Housing	Chrome Plated Brass
Material - Sensing Face	PBTP
Mounting Style	Embeddable
Operating Distance	10mm
Output	NO
Sensor Housing Size	M30
Temperature Range - Operating	-25° to +70°C