



Part Number : [1203411102](#)

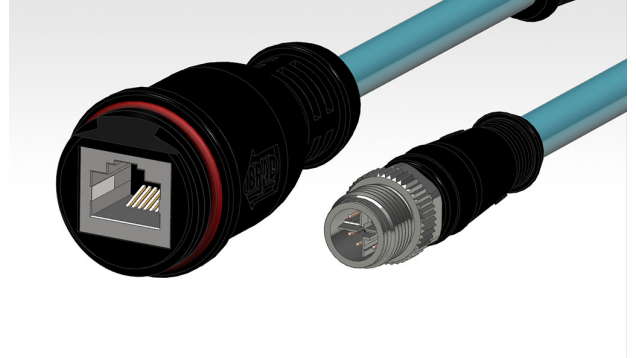
Product Description : Micro-Change (M12) to Standard RJ-45 Double-Ended Cordset, 8 Poles, X-Coded, Male (Straight) to Female RJ-45 (Straight), 26 AWG, Green Teal Shielded TPE Cable, 1.0m (3.28') Length

Series Number : 120341

Status : Active

Product Category : Circular Industrial Cordsets

Engineering Number : E52E03021M010



Documents & Resources

Drawings

[1203411102_sd.pdf](#)

Product Environment Compliance

Compliance

China RoHS	Not Reviewed
EU ELV	Not Reviewed
Low-Halogen Status	Not Reviewed
REACH SVHC	Not Reviewed
EU RoHS	Not Reviewed

Multiple Part Product Compliance Statements

- Eu RoHS
- REACH SVHC
- Low-Halogen

Multiple Part Industry Compliance Documents

- IPC 1752A Class C
- IPC 1752A Class D
- Molex Product Compliance Declaration
- IEC-62474
- chemSHERPA (xml)

EU RoHS Certificate of Compliance

Part Details

General

Status	Active
Category	Circular Industrial Cordsets
Series	120341
Description	Micro-Change (M12) to Standard RJ-45 Double-Ended Cordset, 8 Poles, X-Coded, Male (Straight) to Female RJ-45 (Straight), 26 AWG, Green Teal Shielded TPE Cable, 1.0m (3.28') Length
IP Rating	IP67
Performance Category	5e
Product Name	Micro-Change (M12),RJ45,Industrial Ethernet
Protocol	EtherNet
Type	Double Ended
UPC	195842799820

Electrical

Current - Maximum per Contact	1.5A
Voltage - Maximum	30V AC/DC

Physical

Cable Diameter	7.20mm (.283")
Cable Length	1.0m (3.28')
Color - Cable Jacket	Green Teal
Connector End A	Micro-Change (M12)
Connector End B	RJ-45 (standard)
Coupling Style	Threaded
Gender	Female-Male
Keyway	X-Coded
LED Indicator	None
Material - Cable Jacket	TPE
Material - Connector Body	TPU
Material - Contact	Brass

Material - Coupling Nut	Nickel-plated Brass
Material - Plating Mating	Gold
Net Weight	107.631/g
Orientation	Straight to Straight
Poles	8
Temperature Range - Operating	-25° to +85°C
Wire/Cable Type	Shielded TPE
Wire Size (AWG)	26

This document was generated on Mar 27, 2025