



Part Number : [1300180366](#)

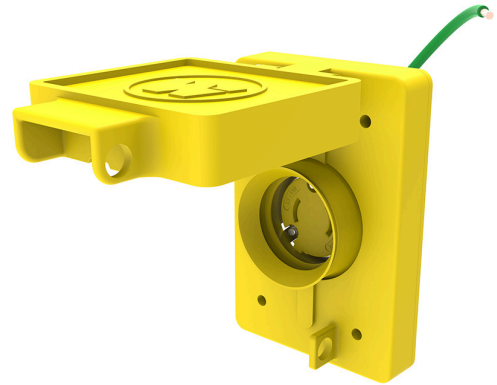
Product Description : Watertite Extreme Receptacle with Single Flip Coverplate with Locking Blade, 2 Pole/2 Wire, NEMA L1-15, 125V

Series Number : 130146

Status : Active

Product Category : Wiring Devices

Engineering Number : 65W04



Documents & Resources

Drawings

[1300180366_sd.pdf](#)

3D Models and Design Files

[1300180366_stp.zip](#)

Product Environment Compliance

Compliance

| | |
|--------------------|--------------|
| China RoHS | Not Reviewed |
| EU ELV | Not Reviewed |
| Low-Halogen Status | Not Reviewed |
| REACH SVHC | Not Reviewed |
| EU RoHS | Not Reviewed |

Multiple Part Product Compliance Statements

- Eu RoHS
- REACH SVHC
- Low-Halogen

Multiple Part Industry Compliance Documents

- IPC 1752A Class C
- IPC 1752A Class D
- Molex Product Compliance Declaration
- IEC-62474

Part Details

General

| | |
|--------------------|--|
| Status | Active |
| Category | Wiring Devices |
| Series | 130146 |
| Description | Watertite Extreme Receptacle with Single Flip Coverplate with Locking Blade, 2 Pole/2 Wire, NEMA L1-15, 125V |
| IP Rating | IP67 |
| NEMA Configuration | NEMA L1-15 |
| Product Name | Watertite Extreme |
| Specialty | N/A |
| Type | Receptacle |
| UPC | 78678871500 |

Agency

| | |
|-----|--------|
| CSA | LR6837 |
| UL | E68122 |

Electrical

| | |
|-------------------------------|-------|
| Current - Maximum per Contact | 15.0A |
| GFCI | No |
| Voltage - Maximum | 125V |

Physical

| | |
|-------------------|--------|
| Cord Type | N/A |
| Flange | No |
| Flip Lid | Yes |
| Gender | Female |
| Length | N/A |
| Lighted Connector | No |
| Locking Blade | Yes |

| | |
|-----------------|---------------|
| Net Weight | 320.689/g |
| Poles | 2-pole/2-wire |
| Receptacle Type | Single |

This document was generated on Mar 27, 2025