



Part Number : [1300478010](#)

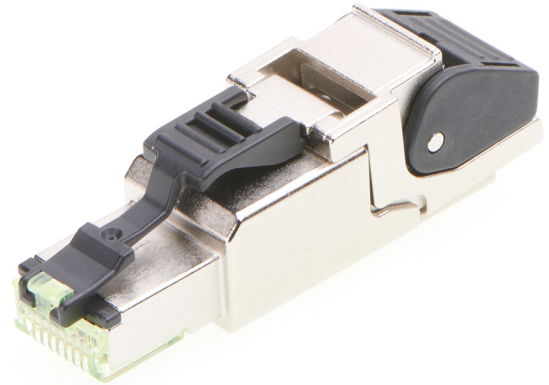
Product Description : Brad RJ-45 Field Attachable Connector, 8 Poles, X-Coded, Straight, Male, Shielded, IDC Termination, AWG 26-24

Series Number : 130047

Status : Active

Product Category : Circular Industrial Connectors

Engineering Number : E6AS06-6




Documents & Resources

Drawings

[1300478010_sd.pdf](#)

Product Environment Compliance

Compliance

| | |
|--------------------|---|
| GADSL/IMDS | Not Relevant |
| China RoHS |  |
| EU ELV | Not Relevant |
| Low-Halogen Status | Low-Halogen per IEC 61249-2-21 |
| REACH SVHC | Not Contained per D(2022)9120-DC (17 Jan 2023) |
| EU RoHS | Compliant per EU 2015/863 |

Multiple Part Product Compliance Statements

- Eu RoHS
- REACH SVHC
- Low-Halogen

Multiple Part Industry Compliance Documents

- IPC 1752A Class C
- IPC 1752A Class D
- Molex Product Compliance Declaration
- IEC-62474

Part Details

General

| | |
|--------------|---|
| Status | Active |
| Category | Circular Industrial Connectors |
| Series | 130047 |
| Description | Brad RJ-45 Field Attachable Connector, 8 Poles, X-Coded, Straight, Male, Shielded, IDC Termination, AWG 26-24 |
| Approvals | cCSAus certified |
| Comments | POE+ according to IEEE 802.3AT |
| IP Rating | IP20 |
| Product Name | RJ45 Cat6A |
| Type | Field Attachable Connector |
| UPC | 889056623261 |

Agency

| | |
|----|---------|
| UL | E361772 |
|----|---------|

Electrical

| | |
|-------------------------------|------|
| Current - Maximum per Contact | 0.5A |
| Voltage - Maximum | 48V |

Physical

| | |
|---------------------------|---------------------------|
| Cable Diameter | 5.00-9.00mm (.197-.354") |
| Communication Speed | 10-Gigabit Ethernet |
| Coupling Type | Push to Lock |
| Diagnostics / LEDs | No |
| Diagnostics Port | No |
| Gender | Male |
| Keyway | X-Coded |
| Material - Connector Body | Zinc Die-Cast with Nickel |
| Material - Contact | Brass |

| | |
|-------------------------------|----------------|
| Material - Coupling Nut | Clear UL 94 V0 |
| Material - Plating Mating | Gold |
| Net Weight | 20.860/g |
| Orientation | Straight |
| Poles | 8 |
| Temperature Range - Operating | -40°C to +85°C |
| Wire Size (AWG) | 26, 24 |

This document was generated on Mar 27, 2025