



**Part Number :** [1300480454](#)

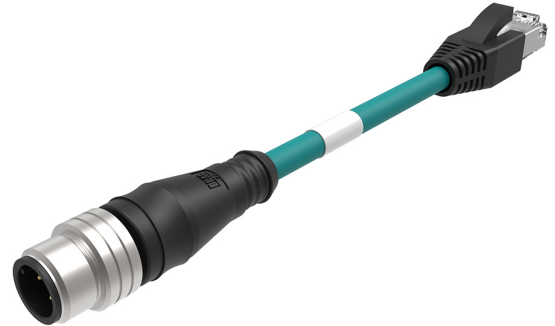
**Product Description :** Micro-Change (M12) to Standard RJ-45 Double-Ended Cordset, 4 Poles, D-Coded, Male (Straight) to Male RJ-45 (Straight), 24 AWG, Teal Unshielded TPE Cat5e Cable, 0.50m (1.64') Length

**Series Number :** 130048

**Status :** Active

**Product Category :** Circular Industrial Cordsets

**Engineering Number :** E16A06004M005



---

## Documents & Resources

### Drawings

[1300480454\\_sd.pdf](#)

---

## Product Environment Compliance

### Compliance

China RoHS	Not Reviewed
EU ELV	Not Reviewed
Low-Halogen Status	Not Reviewed
REACH SVHC	Not Reviewed
EU RoHS	Not Reviewed

### Multiple Part Product Compliance Statements

- Eu RoHS
- REACH SVHC
- Low-Halogen

### Multiple Part Industry Compliance Documents

- IPC 1752A Class C
- IPC 1752A Class D
- Molex Product Compliance Declaration
- IEC-62474
- chemSHERPA (xml)

### EU RoHS Certificate of Compliance

---

## Part Details

### General

Status	Active
Category	Circular Industrial Cordsets
Series	130048
Description	Micro-Change (M12) to Standard RJ-45 Double-Ended Cordset, 4 Poles, D-Coded, Male (Straight) to Male RJ-45 (Straight), 24 AWG, Teal Unshielded TPE Cat5e Cable, 0.50m (1.64') Length
IP Rating	IP67
Performance Category	5e
Product Name	Micro-Change (M12), Industrial Ethernet, RJ45
Protocol	EtherNet
Type	Double Ended
UPC	78172565052

### Electrical

Current - Maximum per Contact	1.5A
Voltage - Maximum	30V AC/DC

### Physical

Cable Diameter	6.10mm (.240")
Cable Length	0.50m (1.64')
Color - Cable Jacket	Teal
Connector End A	Micro-Change (M12)
Connector End B	RJ-45 (standard)
Coupling Style	Threaded
Gender	Male-Male
Keyway	D-Coded
LED Indicator	None
Material - Cable Jacket	TPE
Material - Connector Body	PUR
Material - Contact	Copper Alloy, Phosphor Bronze

Material - Coupling Nut	Nickel-plated Brass
Material - Plating Mating	Gold
Orientation	Straight to Straight
Poles	4
Temperature Range - Operating	-20° to +75°C
Wire/Cable Type	Unshielded TPE/AWM 2463
Wire Size (AWG)	24

---

This document was generated on Mar 27, 2025