



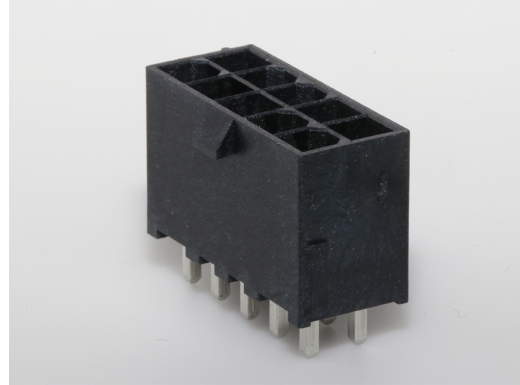
**Part Number :** 462076010

**Product Description :** 4.20mm Pitch, Mini-Fit Jr. Reflow Solder Capable Header, Dual Row, Vertical, 10 Circuits, 1.57mm PCB Thickness, without PCB Pegs, LCP Housing, with Gold (Au) Plating, Glow-Wire Capable, Tray

**Series Number :** 46207

**Status :** Active

**Product Category :** PCB Headers and Receptacles



## Product Environment Compliance

### Compliance

GADSL/IMDS	Compliant with Exemption 44; 34; 33
China RoHS	
EU ELV	Not Relevant
Low-Halogen Status	Low-Halogen per IEC 61249-2-21
REACH SVHC	Not Contained per D(2024)7663-DC (21 Jan 2025)
EU RoHS	Compliant per EU 2015/863

### Multiple Part Product Compliance Statements

- Eu RoHS
- REACH SVHC
- Low-Halogen

### Multiple Part Industry Compliance Documents

- IPC 1752A Class C
- IPC 1752A Class D
- Molex Product Compliance Declaration
- IEC-62474
- chemSHERPA (xml)

### EU RoHS Certificate of Compliance

## Part Details

### General

Status	Active
--------	--------

Category	PCB Headers and Receptacles
Series	46207
Description	4.20mm Pitch, Mini-Fit Jr. Reflow Solder Capable Header, Dual Row, Vertical, 10 Circuits, 1.57mm PCB Thickness, without PCB Pegs, LCP Housing, with Gold (Au) Plating, Glow-Wire Capable, Tray
Application	Board-to-Board, Power, Wire-to-Board
Comments	Current for wire-to-wire applications = 13.0A max. per circuit; Current for wire-to-board applications = 9.0A max. per circuit
Component Type	PCB Header
Product Name	Mini-Fit Jr.
UPC	884982203419

#### Agency

CSA	LR19980
UL	E29179

#### Electrical

Current - Maximum per Contact	13.0A
Voltage - Maximum	600V AC (RMS)/DC

#### Physical

Breakaway	No
Circuits (Loaded)	10
Circuits (maximum)	10
Color - Resin	Black
Durability (mating cycles max)	30
First Mate / Last Break	No
Flammability	94V-0
Glow-Wire Capable	Yes
Guide to Mating Part	No
Lock to Mating Part	Yes
Material - Metal	Brass
Material - Plating Mating	Gold

Material - Plating Termination	Matte Tin
Material - Resin	High Temperature Thermoplastic
Net Weight	3.376/g
Number of Rows	2
Orientation	Vertical
Packaging Type	Tray
PC Tail Length	5.26mm
PCB Locator	Yes
PCB Retention	Yes
PCB Thickness - Recommended	1.57mm
Pitch - Mating Interface	4.20mm
Pitch - Termination Interface	4.20mm
Polarized to Mating Part	Yes
Polarized to PCB	Yes
Shrouded	Fully
Stackable	No
Temperature Range - Operating	-40° to +125°C
Termination Interface Style	Through Hole

### Solder Process Data

Max-Duration	30
Lead-Free Process Capability	SMC&WAVE
Max-Cycle	1
Max-Temp	265

---

### Mates With / Use With

#### Mates with Part(s)

Description	Part Number
Mini-Fit TPA2 and Mini-Fit Sigma Dual Row Receptacle Housings	<u>172708</u>
Mini-Fit Jr. Receptacle Housings	<u>5557</u>

---