



Part Number : [1301280119](#)

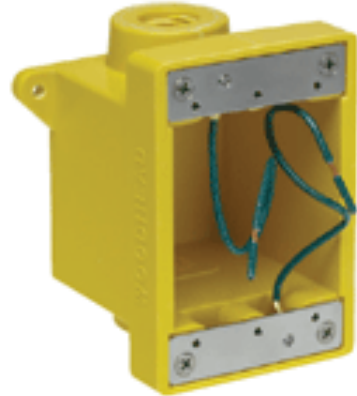
Product Description : Woodhead FD Yellow Glass-Filled Polyester Box, Corrosion - resistant (2) 25.40mm (1.000") Threaded Knock-out Openings

Series Number : 130128

Status : Active

Product Category : Power Distribution

Engineering Number : 454CR



Documents & Resources

Drawings

[1301280119_sd.pdf](#)

Product Environment Compliance

Compliance

GADSL/IMDS	Not Relevant
China RoHS	Not Reviewed per SJ/T 11365-2006
EU ELV	Not Relevant
Low-Halogen Status	Not Reviewed per IEC 61249-2-21
REACH SVHC	Not Reviewed per D(2024)6225-DC (07 Nov 2024)
EU RoHS	Not Reviewed per EU 2015/863

Multiple Part Product Compliance Statements

- Eu RoHS
- REACH SVHC
- Low-Halogen

Multiple Part Industry Compliance Documents

- IPC 1752A Class C
- IPC 1752A Class D
- Molex Product Compliance Declaration
- IEC-62474
- chemSHERPA (xml)

Part Details

General

Status	Active
Category	Power Distribution
Series	130128
Description	Woodhead FD Yellow Glass-Filled Polyester Box, Corrosion -resistant (2) 25.40mm (1.000") Threaded Knock-out Openings
Enclosure Rating	N/A
NEMA Configuration	N/A
Product Name	Woodhead
Type	FD Box - Wet Location
UPC	78678877954

Agency

CSA	LR32159
UL	E117594

Electrical

Current - Maximum per Contact	N/A
GFCI	No
GFCI Reset	N/A
Ground Continuity Monitor	No
Open Neutral Relay	N/A
Voltage - Maximum	N/A

Physical

Cord Diameter	N/A
Cord Grip Body Size	N/A
Cord Length	N/A
Cord Type	N/A
Feed-Thru	Yes
Flip Lid	No

Material - Housing	PBT Glass-Filled
Mounting Style	Permanent
Net Weight	448.149/g
Number of Receptacles	0
Packaging Type	Carton
Receptacle Type	N/A

This document was generated on Mar 27, 2025