



Part Number : [1301410033](#)

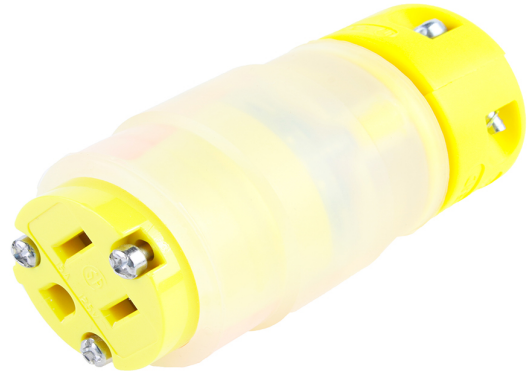
Product Description : Super-Safeway Ground Fault Monitoring Connector 2 Pole/3 Wire, NEMA 5-15, 125V

Series Number : 130141

Status : Active

Product Category : Wiring Devices

Engineering Number : 1547GCM



Product Environment Compliance

Compliance

GADSL/IMDS	Not Relevant
China RoHS	Not Relevant
EU ELV	Not Relevant
Low-Halogen Status	Not Reviewed per IEC 61249-2-21
REACH SVHC	Not Reviewed per D(2024)7663-DC (21 Jan 2025)
EU RoHS	Not Relevant

Multiple Part Product Compliance Statements

- Eu RoHS
- REACH SVHC
- Low-Halogen

Multiple Part Industry Compliance Documents

- IPC 1752A Class C
- IPC 1752A Class D
- Molex Product Compliance Declaration
- IEC-62474
- chemSHERPA (xml)

EU RoHS Certificate of Compliance

Part Details

General

Status	Active
Category	Wiring Devices
Series	130141
Description	Super-Safeway Ground Fault Monitoring Connector 2 Pole/3 Wire, NEMA 5-15, 125V
IP Rating	N/A
NEMA Configuration	NEMA 5-15
Product Name	Super-Safeway
Specialty	Monitoring
Type	Connector
UPC	78678805850

Agency

CSA	LR6837
UL	E10176

Electrical

Current - Maximum per Contact	15.0A
GFCI	No
Voltage - Maximum	125V

Physical

Cord Type	N/A
Flange	No
Flip Lid	No
Gender	Female
Length	N/A
Lighted Connector	Yes
Locking Blade	No
Poles	2-pole/3-wire
Receptacle Type	Single

This document was generated on Mar 27, 2025