



Part Number : [1301410063](#)

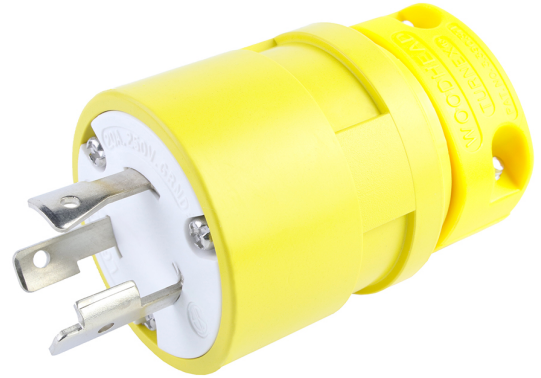
Product Description : Super-Safeway Plug with Locking Blade, 2 Pole/3 Wire, NEMA L6-20, 250V

Series Number : 130141

Status : Active

Product Category : Wiring Devices

Engineering Number : 2648



---

## Documents & Resources


### Drawings

[1301410063\\_sd.pdf](#)

---

## Product Environment Compliance

### Compliance

GADSL/IMDS	Not Relevant
China RoHS	
EU ELV	Not Relevant
Low-Halogen Status	Not Reviewed per IEC 61249-2-21
REACH SVHC	Not Reviewed per D(2024)7663-DC (21 Jan 2025)
EU RoHS	Compliant with Exemption 6(c) per EU 2015/863

### Multiple Part Product Compliance Statements

- Eu RoHS
- REACH SVHC
- Low-Halogen

### Multiple Part Industry Compliance Documents

- IPC 1752A Class C
- IPC 1752A Class D
- Molex Product Compliance Declaration
- IEC-62474

## Part Details

### General

Status	Active
Category	Wiring Devices
Series	130141
Description	Super-Safeway Plug with Locking Blade, 2 Pole/3 Wire, NEMA L6-20, 250V
IP Rating	N/A
NEMA Configuration	NEMA L6-20
Product Name	Super-Safeway
Specialty	N/A
Type	Plug
UPC	78678870412

### Agency

CSA	LR6837
UL	E10176

### Electrical

Current - Maximum per Contact	20.0A
GFCI	No
Voltage - Maximum	250V

### Physical

Cord Type	N/A
Flange	No
Flip Lid	No
Gender	Male
Length	N/A
Lighted Connector	No
Locking Blade	Yes

Net Weight	185.210/g
Poles	2-pole/3-wire
Receptacle Type	N/A

---

This document was generated on Mar 27, 2025