



Part Number : [1301460040](#)

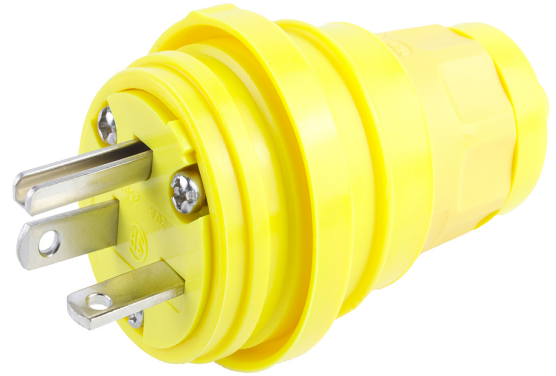
Product Description : Watertite Extreme Plug,
2 Pole/3 Wire, NEMA 6-20, 250V, Cord Grip
Body Size F2, Silicone Husk

Series Number : 130146

Status : Active

Product Category : Wiring Devices

Engineering Number : 14W48



Documents & Resources

Drawings


[1301460040_sd.pdf](#)

3D Models and Design Files

[1301460040_stp.zip](#)

Product Environment Compliance

Compliance

GADSL/IMDS	Not Relevant
China RoHS	
EU ELV	Not Relevant
Low-Halogen Status	Not Reviewed per IEC 61249-2-21
REACH SVHC	Not Reviewed per D(2024)6225-DC (07 Nov 2024)
EU RoHS	Compliant with Exemption 6(c) per EU 2015/863

Multiple Part Product Compliance Statements

- Eu RoHS
- REACH SVHC
- Low-Halogen

Multiple Part Industry Compliance Documents

- IPC 1752A Class C

- IPC 1752A Class D
- Molex Product Compliance Declaration
- IEC-62474
- chemSHERPA (xml)

EU RoHS Certificate of Compliance

Part Details

General

Status	Active
Category	Wiring Devices
Series	130146
Description	Watertite Extreme Plug, 2 Pole/3 Wire, NEMA 6-20, 250V, Cord Grip Body Size F2, Silicone Husk
IP Rating	IP69K
NEMA Configuration	NEMA 6-20
Product Name	Watertite Extreme
Specialty	N/A
Type	Plug
UPC	78678871023

Agency

CSA	LR6837
UL	E10176

Electrical

Current - Maximum per Contact	20.0A
GFCI	No
Voltage - Maximum	250V

Physical

Cord Grip Body Size	F2 1/2"
Cord Type	N/A
Flange	No
Flip Lid	No
Gender	Male

Length	N/A
Lighted Connector	No
Locking Blade	No
Net Weight	324.220/g
Poles	2-pole/3-wire
Receptacle Type	N/A

This document was generated on Mar 27, 2025