



Part Number : [1301460045](#)

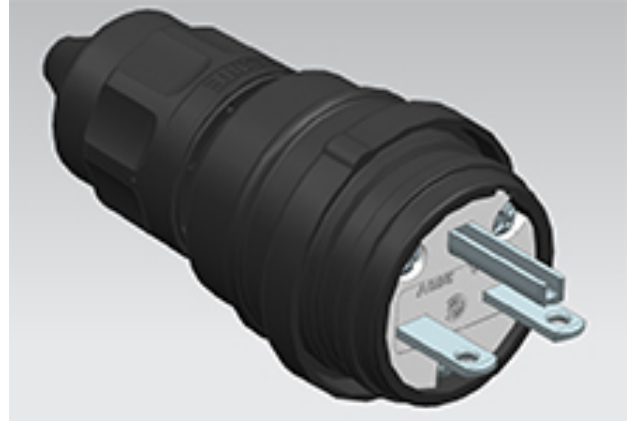
Product Description : Watertite Extreme Extra-Hard Outdoor Use Plug, 2 Pole/3 Wire, NEMA 6-15, 250V, Cord Grip Body Size F2, Black, Silicone Husk

Series Number : 130146

Status : Active

Product Category : Wiring Devices

Engineering Number : 14W49BLK



Documents & Resources

Drawings

[1301460045_sd.pdf](#)

3D Models and Design Files

[1301460045_stp.zip](#)

Product Environment Compliance

Compliance

| | |
|--------------------|--------------|
| GADSL/IMDS | Not Relevant |
| China RoHS | Not Relevant |
| EU ELV | Not Relevant |
| Low-Halogen Status | Not Relevant |
| REACH SVHC | Not Relevant |
| EU RoHS | Not Relevant |

Multiple Part Product Compliance Statements

- Eu RoHS
- REACH SVHC
- Low-Halogen

Multiple Part Industry Compliance Documents

- IPC 1752A Class C
- IPC 1752A Class D
- Molex Product Compliance Declaration
- IEC-62474

Part Details

General

| | |
|--------------------|---|
| Status | Active |
| Category | Wiring Devices |
| Series | 130146 |
| Description | Watertite Extreme Extra-Hard Outdoor Use Plug, 2 Pole/3 Wire, NEMA 6-15, 250V, Cord Grip Body Size F2, Black, Silicone Husk |
| IP Rating | IP69K |
| NEMA Configuration | NEMA 6-15 |
| Product Name | Watertite Extreme |
| Specialty | N/A |
| Type | Plug |
| UPC | 78678871050 |

Agency

| | |
|-----|--------|
| CSA | LR6837 |
| UL | E10176 |

Electrical

| | |
|-------------------------------|-------|
| Current - Maximum per Contact | 15.0A |
| GFCI | No |
| Voltage - Maximum | 250V |

Physical

| | |
|---------------------|---------|
| Cord Grip Body Size | F2 1/2" |
| Cord Type | N/A |
| Flange | No |
| Flip Lid | No |
| Gender | Male |
| Length | N/A |
| Lighted Connector | No |

| | |
|-----------------|---------------|
| Locking Blade | No |
| Net Weight | 265.220/kg |
| Poles | 2-pole/3-wire |
| Receptacle Type | N/A |

This document was generated on Mar 27, 2025