



**Part Number :** [1301460215](#)

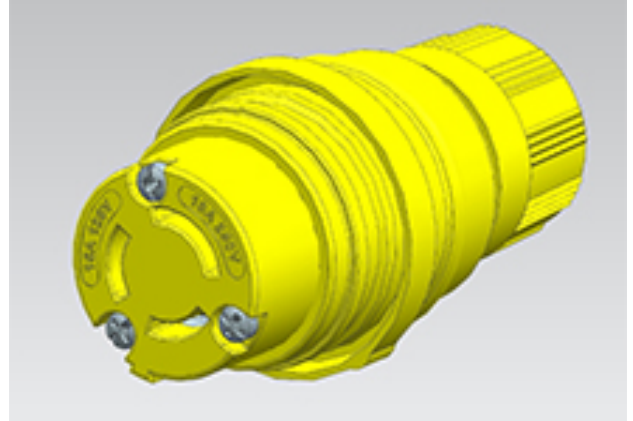
**Product Description :** Watertite Extreme Connector for Male Receptacle with Locking Blade, 3 Pole/3 Wire, Non-NEMA 15A/125V, 10A/250V, F2, Petrochemical Grade

**Series Number :** 130146

**Status :** Active

**Product Category :** Wiring Devices

**Engineering Number :** 25W07MB-P



---

## Documents & Resources

### Drawings

[1301460215\\_sd.pdf](#)

---

## Product Environment Compliance

### Compliance

China RoHS	Not Reviewed
EU ELV	Not Reviewed
Low-Halogen Status	Not Reviewed
REACH SVHC	Not Reviewed
EU RoHS	Not Reviewed

### Multiple Part Product Compliance Statements

- Eu RoHS
- REACH SVHC
- Low-Halogen

### Multiple Part Industry Compliance Documents

- IPC 1752A Class C
- IPC 1752A Class D
- Molex Product Compliance Declaration
- IEC-62474
- chemSHERPA (xml)

### EU RoHS Certificate of Compliance

---

## Part Details

### General

Status	Active
Category	Wiring Devices
Series	130146
Description	Watertite Extreme Connector for Male Receptacle with Locking Blade, 3 Pole/3 Wire, Non-NEMA 15A/125V, 10A/250V, F2, Petrochemical Grade
IP Rating	IP69K
NEMA Configuration	Non-NEMA Locking
Product Name	Watertite Extreme
Specialty	N/A
Type	Connector
UPC	78172559756

### Electrical

Current - Maximum per Contact	10.0A, 15.0A
GFCI	No
Voltage - Maximum	125V / 250V

### Physical

Cord Grip Body Size	F2 1/2"
Cord Type	N/A
Flange	No
Flip Lid	No
Gender	Female
Length	N/A
Lighted Connector	No
Locking Blade	Yes
Poles	3-pole/3-wire
Receptacle Type	Single

---

---

This document was generated on Mar 27, 2025