



Part Number : [1301460218](#)

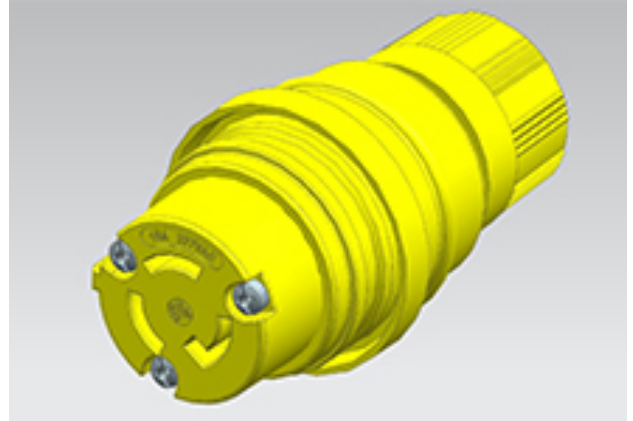
Product Description : Watertite Extreme Connector for Male Receptacle with Locking Blade, 2 Pole/3 Wire, NEMA L7-15, 277V, F2, Petrochemical Grade

Series Number : 130146

Status : Active

Product Category : Wiring Devices

Engineering Number : 25W34MB-P



Documents & Resources

Drawings

[1301460218_sd.pdf](#)

Product Environment Compliance

Compliance

China RoHS	Not Reviewed
EU ELV	Not Reviewed
Low-Halogen Status	Not Reviewed
REACH SVHC	Not Reviewed
EU RoHS	Not Reviewed

Multiple Part Product Compliance Statements

- Eu RoHS
- REACH SVHC
- Low-Halogen

Multiple Part Industry Compliance Documents

- IPC 1752A Class C
- IPC 1752A Class D
- Molex Product Compliance Declaration
- IEC-62474
- chemSHERPA (xml)

EU RoHS Certificate of Compliance

Part Details

General

Status	Active
Category	Wiring Devices
Series	130146
Description	Watertite Extreme Connector for Male Receptacle with Locking Blade, 2 Pole/3 Wire, NEMA L7-15, 277V, F2, Petrochemical Grade
IP Rating	IP69K
NEMA Configuration	NEMA L7-15
Product Name	Watertite Extreme
Specialty	N/A
Type	Connector
UPC	78172559759

Agency

CSA	LR6837
-----	--------

Electrical

Current - Maximum per Contact	15.0A
GFCI	No
Voltage - Maximum	277V

Physical

Cord Grip Body Size	F2 1/2"
Cord Type	N/A
Flange	No
Flip Lid	No
Gender	Female
Length	N/A
Lighted Connector	No
Locking Blade	Yes
Poles	2-pole/3-wire
Receptacle Type	Single

This document was generated on Mar 27, 2025