



Part Number : [1301470018](#)

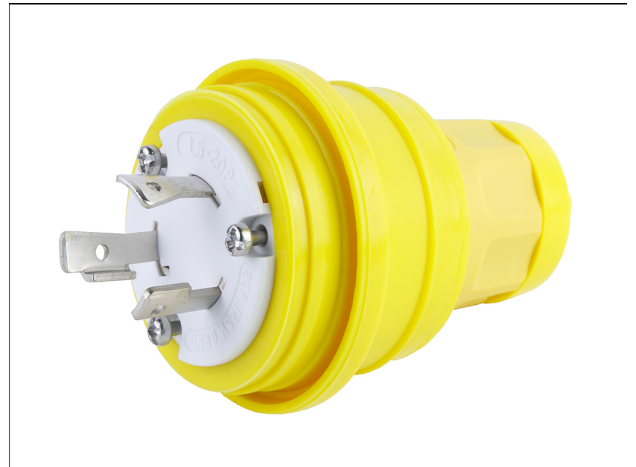
Product Description : Watertite Extreme Plug with Locking Blade, 2 Pole/3 Wire, NEMA L5-20, 125V, Cord Grip Body Size F3

Series Number : 130147

Status : Active

Product Category : Wiring Devices

Engineering Number : 26W47



Documents & Resources

Drawings

[1301470018_sd.pdf](#)

3D Models and Design Files

[1301470018_stp.zip](#)

Product Environment Compliance

Compliance

GADSL/IMDS	Not Relevant
China RoHS	Not Reviewed per SJ/T 11365-2006
EU ELV	Not Relevant
Low-Halogen Status	Not Reviewed per IEC 61249-2-21
REACH SVHC	Contains Lead; diphenyl(2,4,6-trimethylbenzoyl)phosphine oxide per D(2023)3788-DC (14 Jun 2023)
EU RoHS	Compliant with Exemption 6(c) per EU 2015/863

Multiple Part Product Compliance Statements

- Eu RoHS
- REACH SVHC
- Low-Halogen

Multiple Part Industry Compliance Documents

- IPC 1752A Class C

- IPC 1752A Class D
- Molex Product Compliance Declaration
- IEC-62474
- chemSHERPA (xml)

EU RoHS Certificate of Compliance

Part Details

General

Status	Active
Category	Wiring Devices
Series	130147
Description	Watertite Extreme Plug with Locking Blade, 2 Pole/3 Wire, NEMA L5-20, 125V, Cord Grip Body Size F3
IP Rating	IP67
NEMA Configuration	NEMA L5-20
Product Name	Watertite Extreme
Specialty	N/A
Type	Plug
UPC	78678871211

Agency

CSA	LR6837
UL	E10176

Electrical

Current - Maximum per Contact	20.0A
GFCI	No
Voltage - Maximum	125V

Physical

Cord Grip Body Size	F3 3/4"
Cord Type	N/A
Flange	No
Flip Lid	No
Gender	Male

Length	N/A
Lighted Connector	No
Locking Blade	Yes
Net Weight	222.260/g
Poles	2-pole/3-wire
Receptacle Type	N/A

This document was generated on Mar 27, 2025