



Part Number : [1301470056](#)

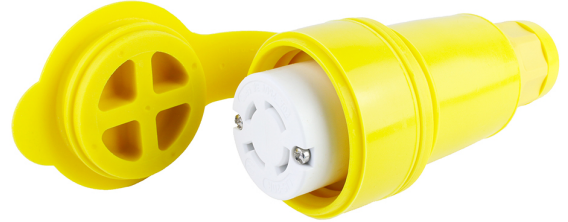
Product Description : Watertite Extreme Connector with Locking Blade, 3 Pole/4 Wire, NEMA L15-20, 3ø 250V, Cord Grip Body Size F3

Series Number : 130147

Status : Active

Product Category : Wiring Devices

Engineering Number : 27W75



Documents & Resources

Drawings

[1301470056_sd.pdf](#)

3D Models and Design Files

[1301470056_stp.zip](#)

Product Environment Compliance

Compliance

GADSL/IMDS	Not Relevant
China RoHS	
EU ELV	Not Relevant
Low-Halogen Status	Not Reviewed per IEC 61249-2-21
REACH SVHC	Not Reviewed per D(2024)6225-DC (07 Nov 2024)
EU RoHS	Compliant with Exemption 6(c) per EU 2015/863

Multiple Part Product Compliance Statements

- Eu RoHS
- REACH SVHC
- Low-Halogen

Multiple Part Industry Compliance Documents

- IPC 1752A Class C

- IPC 1752A Class D
- Molex Product Compliance Declaration
- IEC-62474
- chemSHERPA (xml)

EU RoHS Certificate of Compliance

Part Details

General

Status	Active
Category	Wiring Devices
Series	130147
Description	Watertite Extreme Connector with Locking Blade, 3 Pole/4 Wire, NEMA L15-20, 3Ø 250V, Cord Grip Body Size F3
IP Rating	IP67
NEMA Configuration	NEMA L15-20
Product Name	Watertite Extreme
Specialty	N/A
Type	Connector
UPC	78678871314

Agency

CSA	LR6837
UL	E10176

Electrical

Current - Maximum per Contact	20.0A
GFCI	No
Voltage - Maximum	3Ø 250V

Physical

Cord Grip Body Size	F3 3/4"
Cord Type	N/A
Flange	No
Flip Lid	No

Gender	Female
Length	N/A
Lighted Connector	No
Locking Blade	Yes
Net Weight	320.235/g
Poles	3-pole/4-wire
Receptacle Type	Single

This document was generated on Mar 27, 2025