



Part Number : [1301530140](#)

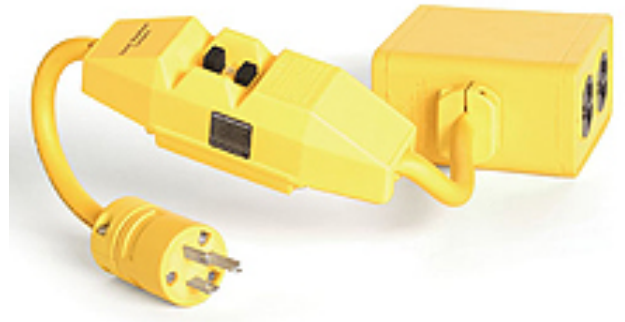
Product Description : Safeway In-Line Commercial GFCI, Permanent Mount, Single Phase, Manual Reset, Outlet Box, NEMA 5-20 Double Duplex with Flip Lids, 20A, 120V, 0.61m (2.0') Cord Length

Series Number : 130153

Status : Active

Product Category : Power Distribution

Engineering Number : 20053W-2



Documents & Resources

Drawings

[1301530140_sd.pdf](#)

Product Environment Compliance

Compliance

China RoHS	Not Reviewed
EU ELV	Not Reviewed
Low-Halogen Status	Not Reviewed
REACH SVHC	Not Reviewed
EU RoHS	Not Reviewed

Multiple Part Product Compliance Statements

- Eu RoHS
- REACH SVHC
- Low-Halogen

Multiple Part Industry Compliance Documents

- IPC 1752A Class C
- IPC 1752A Class D
- Molex Product Compliance Declaration
- IEC-62474
- chemSHERPA (xml)

EU RoHS Certificate of Compliance

Part Details

General

Status	Active
Category	Power Distribution
Series	130153
Description	Safeway In-Line Commercial GFCI, Permanent Mount, Single Phase, Manual Reset, Outlet Box, NEMA 5-20 Double Duplex with Flip Lids, 20A, 120V, 0.61m (2.0') Cord Length
Enclosure Rating	NEMA 4
NEMA Configuration	NEMA 5-20
Product Name	Safeway
Type	GFCI Commercial Duty, Single Phase
UPC	78678828424

Agency

CSA	LR6837
UL	E66308

Electrical

Current - Maximum per Contact	20.0A
GFCI	Yes-In-line
GFCI Reset	Manual
Ground Continuity Monitor	No
Open Neutral Relay	Yes
Voltage - Maximum	120V AC

Physical

Cord Diameter	10.92mm (.430")
Cord Grip Body Size	Internal Double C-Clamp
Cord Length	0.61m (2.0')
Cord Type	12/3 SJTW
Feed-Thru	Yes
Flip Lid	Yes

Material - Housing	Nylon
Mounting Style	Portable
Number of Receptacles	2
Packaging Type	Bag
Receptacle Type	Duplex

This document was generated on Mar 27, 2025