



Part Number : [936010116](#)

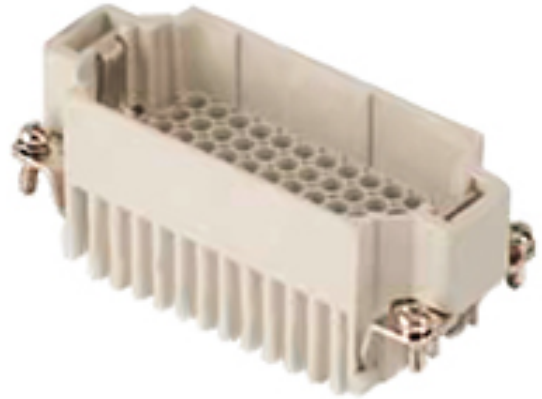
Product Description : GWconnect Crimp Contact Insert, Male, 72-Pole, 10A, Numbered 73-144, for Turned Contacts, Size 16B «77x27»

Series Number : 93601

Status : Active

Product Category : Heavy-Duty Connectors

Engineering Number : 7172.4153.0



Product Environment Compliance

Compliance

| | |
|--------------------|--|
| GADSL/IMDS | Not Relevant |
| China RoHS | |
| EU ELV | Not Relevant |
| Low-Halogen Status | Low-Halogen per IEC 61249-2-21 |
| REACH SVHC | Not Contained per D(2023)8585-DC (23 Jan 2024) |
| EU RoHS | Compliant per EU 2015/863 |

Multiple Part Product Compliance Statements

- Eu RoHS
- REACH SVHC
- Low-Halogen

Multiple Part Industry Compliance Documents

- IPC 1752A Class C
- IPC 1752A Class D
- Molex Product Compliance Declaration
- IEC-62474
- chemSHERPA (xml)

EU RoHS Certificate of Compliance

Part Details

General

| | |
|--------|--------|
| Status | Active |
|--------|--------|

| | |
|----------------|--|
| Category | Heavy-Duty Connectors |
| Series | 93601 |
| Description | GWconnect Crimp Contact Insert, Male, 72-Pole, 10A, Numbered 73-144, for Turned Contacts, Size 16B «77x27» |
| Component Type | Inserts - Crimp Contact |
| Insert Series | S-DD |
| Product Name | GWconnect |
| Standard | CSA C22.2 NO. 182.3, EN 60664-1, EN 61984, UL 1977 |
| UPC | 887191871349 |

Agency

| | |
|-----|---------|
| CSA | 256883 |
| UL | E249674 |

Electrical

| | |
|-------------------------------|-------|
| Current - Maximum per Contact | 10.0A |
| Voltage - Maximum | 250V |

Physical

| | |
|--------------------------------|----------------|
| Component Size | 16B «77X27» |
| Durability (mating cycles max) | 500 |
| Gender | Male |
| Insert Color | Grey |
| Material - Insert | Polycarbonate |
| Number of Rows | 6 |
| Packaging Type | Bag |
| Polarized to Mating Part | Yes |
| Poles | 72 |
| Temperature Range - Operating | -40° to +125°C |

Mates With / Use With

Mates with Part(s)

| Description | Part Number |
|-------------|-------------|
|-------------|-------------|

| | |
|--|------------------|
| GWconnect Crimp Contact Insert, Female, 72-Pole, 10A, Numbered 73-144, for Turned Contacts, Size 16B «77x27» | <u>936010114</u> |
|--|------------------|

Use with Part(s)

| | |
|-------------|------------------------|
| Description | Part Number |
| Use With | Turned Contacts - Male |