



**Part Number :** [936010139](#)

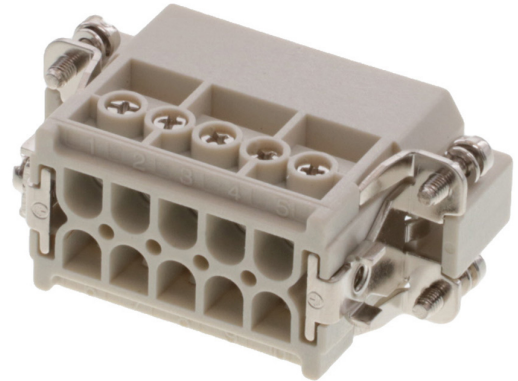
**Product Description :** GWconnect Screw Terminal Insert, Male, 10-Pole, 16A, with Wire Protection, Silver (Ag) Plated Contacts, Size 10A «49x16»

**Series Number :** 93601

**Status :** Active

**Product Category :** Heavy-Duty Connectors


**Engineering Number :** 7210.4411.0



---

## Product Environment Compliance

### Compliance

GADSL/IMDS	Not Relevant
China RoHS	
EU ELV	Not Relevant
Low-Halogen Status	Low-Halogen per IEC 61249-2-21
REACH SVHC	Contains Lead per D(2024)7663-DC (21 Jan 2025)
EU RoHS	Compliant with Exemption 6(c) per EU 2015/863

### Multiple Part Product Compliance Statements

- Eu RoHS
- REACH SVHC
- Low-Halogen

### Multiple Part Industry Compliance Documents

- IPC 1752A Class C
- IPC 1752A Class D
- Molex Product Compliance Declaration
- IEC-62474
- chemSHERPA (xml)

### EU RoHS Certificate of Compliance

---

## Part Details

## General

Status	Active
Category	Heavy-Duty Connectors
Series	93601
Description	GWconnect Screw Terminal Insert, Male, 10-Pole, 16A, with Wire Protection, Silver (Ag) Plated Contacts, Size 10A «49x16»
Component Type	Inserts - Screw Terminal
Insert Series	S-A
Product Name	GWconnect
Standard	CSA C22.2 NO. 182.3, EN 60664-1, EN 61984, UL 1977
UPC	887191872575

## Agency

CSA	256883
UL	E249674

## Electrical

Current - Maximum per Contact	16.0A
Voltage - Maximum	230V / 400V
Wire Protection	Yes

## Physical

Component Size	10A «49X16»
Durability (mating cycles max)	500
Gender	Male
Insert Color	Grey
Material - Contact	Copper Alloy
Material - Insert	Polycarbonate
Material - Plating	Silver
Net Weight	48.700/g
Number of Rows	2
Packaging Type	Bag
Polarized to Mating Part	Yes

Poles	10
Stripping Length	7.00mm
Temperature Range - Operating	-40° to +125°C
Tightening Test Torque	0.50 Nm
Wire Size (AWG)	14-20
Wire Size mm <sup>2</sup>	0.50-2.50

---

## Mates With / Use With

### Mates with Part(s)

Description	Part Number
GWconnect Screw Terminal Insert, Female, 10-Pole, 16A, with Wire Protection, Silver (Ag) Plated Contacts, Size 10A «49x16»	<u>936010137</u>

### Use with Part(s)

Description	Part Number
Use With	Size 10A «49x16» Hoods and Housings