



**Part Number :** [936010261](#)

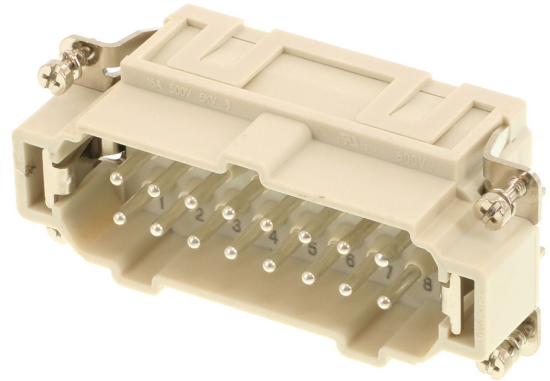
**Product Description :** GWconnect Push-in Terminal Insert, Male, 16-Pole, 16A, Numbered 1-16, Silver (Ag) Plated Contacts, Size 16B «77x27»

**Series Number :** 93601

**Status :** Active

**Product Category :** Heavy-Duty Connectors

**Engineering Number :** 7316.5963.0



---

## Product Environment Compliance

### Compliance

GADSL/IMDS	Not Relevant
China RoHS	
EU ELV	Not Relevant
Low-Halogen Status	Low-Halogen per IEC 61249-2-21
REACH SVHC	Contains Lead per D(2024)7663-DC (21 Jan 2025)
EU RoHS	Compliant with Exemption 6(c) per EU 2015/863

### Multiple Part Product Compliance Statements

- Eu RoHS
- REACH SVHC
- Low-Halogen

### Multiple Part Industry Compliance Documents

- IPC 1752A Class C
- IPC 1752A Class D
- Molex Product Compliance Declaration
- IEC-62474
- chemSHERPA (xml)

### EU RoHS Certificate of Compliance

---

## Part Details

## General

Status	Active
Category	Heavy-Duty Connectors
Series	93601
Description	GWconnect Push-in Terminal Insert, Male, 16-Pole, 16A, Numbered 1-16, Silver (Ag) Plated Contacts, Size 16B «77x27»
Comments	Stranded wire with bush terminal 0.14-2.50 (26-14 AWG), Stranded wires with single strand greater than and equal to 0.20mm (16-12 AWG), and Solid wires 0.50-2.50 (20-14 AWG)
Component Type	Inserts - Push-in Terminal
Insert Series	S-EP
Product Name	GWconnect
Standard	CSA C22.2 NO. 182.3, EN 60664-1, EN 61984, UL 1977
UPC	887191879598

## Agency

CSA	256883
UL	E249674

## Electrical

Current - Maximum per Contact	16.0A
Voltage - Maximum	500V

## Physical

Component Size	16B «77X27»
Durability (mating cycles max)	500
Gender	Male
Insert Color	Grey
Material - Contact	Copper Alloy
Material - Insert	Polycarbonate
Material - Plating	Silver
Net Weight	95.800/g

Number of Rows	2
Packaging Type	Bag
Polarized to Mating Part	Yes
Poles	16
Stripping Length	9.00-11.00mm
Temperature Range - Operating	-40° to +125°C
Wire Size (AWG)	12-16, 14-20, 14-26
Wire Size mm <sup>2</sup>	0.14-2.50, 0.50-2.50, 1.50-4.00

---

## Mates With / Use With

### Mates with Part(s)

Description	Part Number
GWconnect Push-in Terminal Insert, Female, 16-Pole, 16A, Numbered 1-16, Silver (Ag) Plated Contacts, Size 16B «77x27»	<u>936010257</u>

### Use with Part(s)

Description	Part Number
Use With	Size 16B «77x27» Hoods and Housings