



Part Number : [936010363](#)

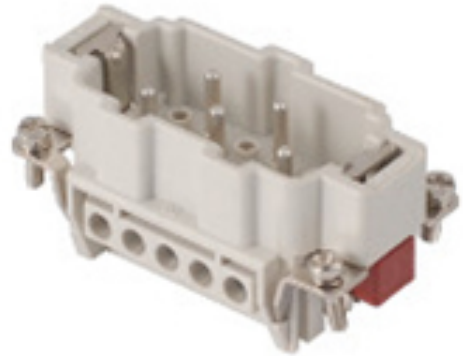
Product Description : GWconnect Screw Terminal Insert, Male, 5-Pole, 16A, Silver (Ag) Plated Contacts, Numbered 1-10, with Wire Protection, Size 10B «57x27»

Series Number : 93601

Status : Active

Product Category : Heavy-Duty Connectors

Engineering Number : 7503.6131.0



Product Environment Compliance

Compliance

| | |
|--------------------|---|
| GADSL/IMDS | Not Relevant |
| China RoHS | |
| EU ELV | Not Relevant |
| Low-Halogen Status | Not Reviewed per IEC 61249-2-21 |
| REACH SVHC | Not Contained per ED/71/2019 (16 July 2019) |
| EU RoHS | Compliant per EU 2015/863 |

Multiple Part Product Compliance Statements

- Eu RoHS
- REACH SVHC
- Low-Halogen

Multiple Part Industry Compliance Documents

- IPC 1752A Class C
- IPC 1752A Class D
- Molex Product Compliance Declaration
- IEC-62474
- chemSHERPA (xml)

EU RoHS Certificate of Compliance

Part Details

General

| | |
|--------|--------|
| Status | Active |
|--------|--------|

| | |
|----------------|--|
| Category | Heavy-Duty Connectors |
| Series | 93601 |
| Description | GWconnect Screw Terminal Insert, Male, 5-Pole, 16A, Silver (Ag) Plated Contacts, Numbered 1-10, with Wire Protection, Size 10B «57x27» |
| Component Type | Inserts - Screw Terminal Block |
| Insert Series | S-EHV |
| Product Name | GWconnect |
| Standard | CSA C22.2 NO. 182.3, EN 60664-1, EN 61984, UL 1977 |
| UPC | 887191886213 |

Agency

| | |
|-----|---------|
| CSA | 256883 |
| UL | E249674 |

Electrical

| | |
|-------------------------------|-------|
| Current - Maximum per Contact | 16.0A |
| Voltage - Maximum | 830V |

Physical

| | |
|--------------------------------|----------------|
| Component Size | 10B «57X27» |
| Durability (mating cycles max) | 500 |
| Gender | Male |
| Insert Color | Grey |
| Material - Contact | Copper Alloy |
| Material - Insert | Polycarbonate |
| Material - Plating | Silver |
| Net Weight | 53.000/g |
| Number of Rows | 2 |
| Packaging Type | Bag |
| Polarized to Mating Part | Yes |
| Poles | 5 |
| Stripping Length | 7.00mm |
| Temperature Range - Operating | -40° to +125°C |

| | |
|---------------------------|-----------|
| Tightening Test Torque | 0.50 Nm |
| Wire Size (AWG) | 14-20 |
| Wire Size mm ² | 0.50-2.50 |

Mates With / Use With

Mates with Part(s)

| Description | Part Number |
|--|------------------|
| GWconnect Screw Terminal Insert, Female, 5-Pole, 16A, Silver (Ag) Plated Contacts, Numbered 1-10, with Wire Protection, Size 10B «57x27» | <u>936010360</u> |

Use with Part(s)

| Description | Part Number |
|-------------|-------------------------------------|
| Use With | Size 10B «57x27» Hoods and Housings |