



Part Number : [936010374](#)

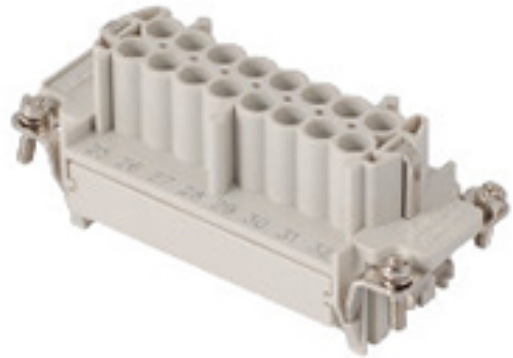
Product Description : GWconnect Crimp Contact Insert, Female, 8-Pole, 16A, Numbered 1-16, Size 16B «77x27»

Series Number : 93601

Status : Active

Product Category : Heavy-Duty Connectors

Engineering Number : 7506.6072.0



Product Environment Compliance

Compliance

GADSL/IMDS	Not Relevant
China RoHS	
EU ELV	Not Relevant
Low-Halogen Status	Not Reviewed per IEC 61249-2-21
REACH SVHC	Not Reviewed per D(2024)7663-DC (21 Jan 2025)
EU RoHS	Compliant with Exemption 6(c) per EU 2015/863

Multiple Part Product Compliance Statements

- Eu RoHS
- REACH SVHC
- Low-Halogen

Multiple Part Industry Compliance Documents

- IPC 1752A Class C
- IPC 1752A Class D
- Molex Product Compliance Declaration
- IEC-62474
- chemSHERPA (xml)

EU RoHS Certificate of Compliance

Part Details

General

Status	Active
Category	Heavy-Duty Connectors
Series	93601
Description	GWconnect Crimp Contact Insert, Female, 8-Pole, 16A, Numbered 1-16, Size 16B «77x27»
Component Type	Inserts - Crimp Contact
Insert Series	S-EHV
Product Name	GWconnect
Standard	CSA C22.2 NO. 182.3, EN 60664-1, EN 61984, UL 1977
UPC	887191886824

Agency

CSA	256883
UL	E249674

Electrical

Current - Maximum per Contact	16.0A
Voltage - Maximum	830V

Physical

Component Size	16B «77X27»
Durability (mating cycles max)	500
Gender	Female
Insert Color	Grey
Material - Insert	Polycarbonate
Number of Rows	2
Packaging Type	Bag
Polarized to Mating Part	Yes
Poles	8
Stripping Length	7.50mm
Temperature Range - Operating	-40° to +125°C

Mates With / Use With

Mates with Part(s)

Description	Part Number
GWconnect Crimp Contact Insert, Male, 8-Pole, 16A, Numbered 1-16, Size 16B «77x27»	<u>936010380</u>

Use with Part(s)

Description	Part Number
Use With	Size 16B «77x27» Hoods and Housings