



Part Number : [936010506](#)

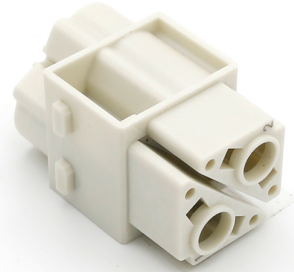
Product Description : GWconnect Crimp Contact Power Module, Female, 2-Pole, 100A, for Crimp Contacts, Grey

Series Number : 93601

Status : Active

Product Category : Heavy-Duty Connectors

Engineering Number : 7702.3090.0



---

## Product Environment Compliance

### Compliance

GADSL/IMDS	Not Relevant
China RoHS	
EU ELV	Not Relevant
Low-Halogen Status	Low-Halogen per IEC 61249-2-21
REACH SVHC	Not Contained per D(2024)7663-DC (21 Jan 2025)
EU RoHS	Compliant per EU 2015/863

### Multiple Part Product Compliance Statements

- Eu RoHS
- REACH SVHC
- Low-Halogen

### Multiple Part Industry Compliance Documents

- IPC 1752A Class C
- IPC 1752A Class D
- Molex Product Compliance Declaration
- IEC-62474
- chemSHERPA (xml)

### EU RoHS Certificate of Compliance

---

## Part Details

## General

Status	Active
Category	Heavy-Duty Connectors
Series	93601
Description	GWconnect Crimp Contact Power Module, Female, 2-Pole, 100A, for Crimp Contacts, Grey
Component Type	Power Module
Product Name	GWconnect
UPC	887191825380

## Agency

UL	E249674
----	---------

## Electrical

Current - Maximum per Contact	100.0A
Voltage - Maximum	1000V

## Physical

Color - Resin	Gray
Durability (mating cycles max)	500
Gender	Female
Material - Housing	Polycarbonate
Net Weight	21.000/g
Packaging Type	Bag
Polarized to Mating Part	Yes
Poles	2
Temperature Range - Operating	-40° to +125°C

---

## Mates With / Use With

### Mates with Part(s)

Description	Part Number
GWconnect Crimp Contact Power Module, Male, 2-Pole, 100A, for Crimp Contacts, Grey	<u>936010507</u>

Use with Part(s)

Description	Part Number
Use With	100.0A Turned Female Crimp Contacts

---

This document was generated on Mar 27, 2025