



Part Number : [936010534](#)

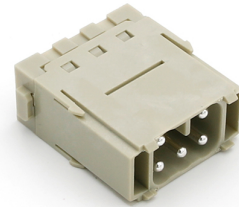
Product Description : GWconnect Spring Terminal Insert, Male, 5-Pole, 16A, Silver (Ag) Plated Contacts, Size «34.2x14.6»

Series Number : 93601

Status : Active

Product Category : Heavy-Duty Connectors

Engineering Number : 7705.3362.0



Product Environment Compliance

Compliance

GADSL/IMDS	Not Relevant
China RoHS	Not Reviewed per SJ/T 11365-2006
EU ELV	Not Relevant
Low-Halogen Status	Not Reviewed per IEC 61249-2-21
REACH SVHC	Not Reviewed per D(2024)7663-DC (21 Jan 2025)
EU RoHS	Not Reviewed per EU 2015/863

Multiple Part Product Compliance Statements

- Eu RoHS
- REACH SVHC
- Low-Halogen

Multiple Part Industry Compliance Documents

- IPC 1752A Class C
- IPC 1752A Class D
- Molex Product Compliance Declaration
- IEC-62474
- chemSHERPA (xml)

EU RoHS Certificate of Compliance

Part Details

General

Status	Active
Category	Heavy-Duty Connectors
Series	93601
Description	GWconnect Spring Terminal Insert, Male, 5-Pole, 16A, Silver (Ag) Plated Contacts, Size «34.2x14.6»
Component Type	Inserts - Spring Terminal
Insert Series	S-M16/5
Product Name	GWconnect
Standard	CSA C22.2 NO. 182.3, EN 60664-1, EN 61984, UL 1977
UPC	887191830452

Agency

UL	E249674
----	---------

Electrical

Current - Maximum per Contact	16.0A
Voltage - Maximum	400V

Physical

Component Size	«34.2x14.6»
Durability (mating cycles max)	500
Gender	Male
Insert Color	Grey
Material - Contact	Copper Alloy
Material - Insert	Polycarbonate
Material - Plating	Silver
Net Weight	16.520/g
Number of Rows	2
Packaging Type	Bag
Polarized to Mating Part	Yes
Poles	5
Stripping Length	9.00mm
Temperature Range - Operating	-40° to +125°C

Wire Size (AWG)	14-26
Wire Size mm ²	0.14-2.50

Mates With / Use With

Mates with Part(s)

Description	Part Number
GWconnect Spring Terminal Insert, Female, 5-Pole, 16A, Silver (Ag) Plated Contacts, Size «34.2x14.6»	<u>936010533</u>

Use with Part(s)

Description	Part Number
Use With	Series S-M Frames
