



Part Number : [936011162](#)

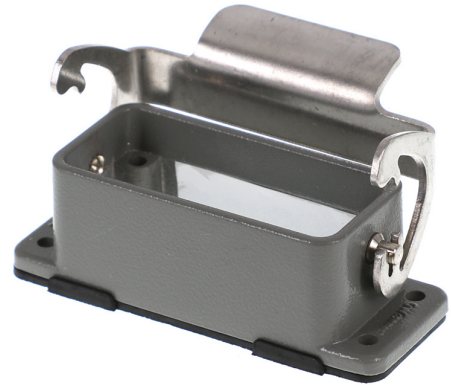
Product Description : GWconnect STD - Standard, Single Lever Bulkhead Mount Housing, Die-cast Aluminum, with 1 Lever, Size 10A «49x16», Grey

Series Number : 93601

Status : Active

Product Category : Heavy-Duty Connectors

Engineering Number : 7810.4541.0



Documents & Resources

Drawings

[936011162_sd.pdf](#)

3D Models and Design Files

[936011162_stp.zip](#)

Product Environment Compliance

Compliance

GADSL/IMDS	Not Relevant
China RoHS	
EU ELV	Not Relevant
Low-Halogen Status	Low-Halogen per IEC 61249-2-21
REACH SVHC	Not Contained per D(2024)7663-DC (21 Jan 2025)
EU RoHS	Compliant per EU 2015/863

[Multiple Part Product Compliance Statements](#)

- Eu RoHS
- REACH SVHC
- Low-Halogen

[Multiple Part Industry Compliance Documents](#)

- IPC 1752A Class C
- IPC 1752A Class D

- Molex Product Compliance Declaration
- IEC-62474
- chemSHERPA (xml)

EU RoHS Certificate of Compliance

Part Details

General

Status	Active
Category	Heavy-Duty Connectors
Series	93601
Description	GWconnect STD - Standard, Single Lever Bulkhead Mount Housing, Die-cast Aluminum, with 1 Lever, Size 10A «49x16», Grey
Component Type	Single Lever Bulkhead Housing
IP Rating	IP66
Product Name	GWconnect
Standard	ANSI/UL 50, ANSI/UL 50 E, CSA C22.2 No.94-1-2, EN 61984
Type	STD
UPC	887191874692

Agency

CSA	256883
UL	E249674

Electrical

Voltage - Maximum	500V
-------------------	------

Physical

Component Size	10A «49X16»
Housing Coating	Polyester Powder
Housing Color	Grey RAL 7037
Lock to Mating Part	Yes
Material - Housing	Die-cast Aluminum
Material - Lever	Stainless Steel

Mounting Style	Bulkhead
Net Weight	166.000/g
Number of Levers	1
Packaging Type	Bag
Thread Size	N/A
Thread Type	N/A

Use with Part(s)

Description	Part Number
Use With	Size 10A «49x16» S-A and S-D Inserts