



Part Number : [936013538](#)

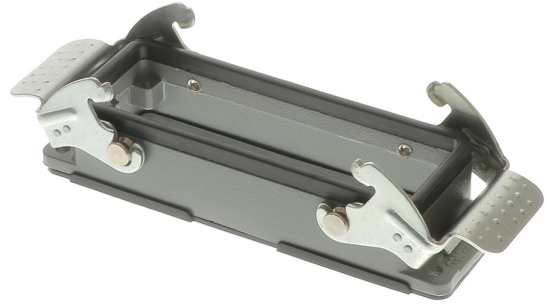
Product Description : GWconnect STD - Standard, Double Lever Bulkhead Mount Housing, Die-cast Aluminum, with 2 Levers, with Gasket, Size 24B «104x27», Grey

Series Number : 93601

Status : Active

Product Category : Heavy-Duty Connectors

Engineering Number : 7824.6414.0



Product Environment Compliance

Compliance

| | |
|--------------------|------------------------------------------------|
| GADSL/IMDS | Not Relevant |
| China RoHS | |
| EU ELV | Not Relevant |
| Low-Halogen Status | Low-Halogen per IEC 61249-2-21 |
| REACH SVHC | Not Contained per D(2024)7663-DC (21 Jan 2025) |
| EU RoHS | Compliant per EU 2015/863 |

Multiple Part Product Compliance Statements

- Eu RoHS
- REACH SVHC
- Low-Halogen

Multiple Part Industry Compliance Documents

- IPC 1752A Class C
- IPC 1752A Class D
- Molex Product Compliance Declaration
- IEC-62474
- chemSHERPA (xml)

EU RoHS Certificate of Compliance

Part Details

General

| | |
|----------------|---------------------------------------------------------------------------------------------------------------------------------------|
| Status | Active |
| Category | Heavy-Duty Connectors |
| Series | 93601 |
| Description | GWconnect STD - Standard, Double Lever Bulkhead Mount Housing, Die-cast Aluminum, with 2 Levers, with Gasket, Size 24B «104x27», Grey |
| Component Type | Double Lever Bulkhead Housing |
| IP Rating | IP66 |
| Product Name | GWconnect |
| Standard | ANSI/UL 50, ANSI/UL 50 E, CSA C22.2 No.94-1-2, EN 61984 |
| Type | STD |
| UPC | 887191843964 |

Agency

| | |
|-----|---------|
| CSA | 256883 |
| UL | E249674 |

Electrical

| | |
|-------------------|------|
| Voltage - Maximum | 500V |
|-------------------|------|

Physical

| | |
|---------------------|-------------------|
| Component Size | 24B «104X27» |
| Housing Coating | Polyester Powder |
| Housing Color | Grey RAL 7037 |
| Lock to Mating Part | Yes |
| Material - Gasket | NBR |
| Material - Housing | Die-cast Aluminum |
| Material - Lever | Galvanized Steel |
| Mounting Style | Bulkhead |
| Net Weight | 157.900/g |
| Number of Levers | 2 |
| Packaging Type | Bag |

| | |
|-------------|-----|
| Thread Size | N/A |
| Thread Type | N/A |

Use with Part(s)

| Description | Part Number |
|-------------|------------------------------------------------------------------------------------------------|
| Use With | Size 24B «104x27» S-D, S-DD, S-E, S-EE, S-EP, S-ES, S-HSB, S-ESHV, S-K, S-M, and S-EHV Inserts |

This document was generated on Mar 27, 2025