



Part Number : [936014133](#)

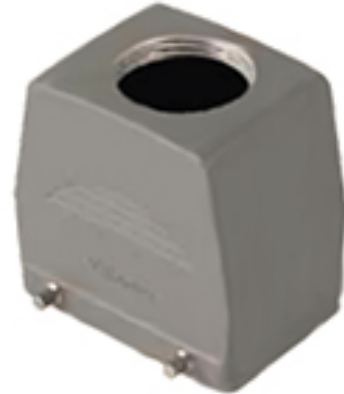
Product Description : GWconnect STD - Standard, Double Lever Hood, Die-cast Aluminum, with 4 Pegs, Top Entry, Size 32A «66x40», Pg21 Thread, High Construction, Grey

Series Number : 93601

Status : Active

Product Category : Heavy-Duty Connectors

Engineering Number : 7832.4643.5



Product Environment Compliance

Compliance

GADSL/IMDS	Not Relevant
China RoHS	
EU ELV	Not Relevant
Low-Halogen Status	Not Reviewed per IEC 61249-2-21
REACH SVHC	Not Contained per D(2022)9120-DC (17 Jan 2023)
EU RoHS	Compliant per EU 2015/863

Multiple Part Product Compliance Statements

- Eu RoHS
- REACH SVHC
- Low-Halogen

Multiple Part Industry Compliance Documents

- IPC 1752A Class C
- IPC 1752A Class D
- Molex Product Compliance Declaration
- IEC-62474
- chemSHERPA (xml)

EU RoHS Certificate of Compliance

Part Details

General

Status	Active
--------	--------

Category	Heavy-Duty Connectors
Series	93601
Description	GWconnect STD - Standard, Double Lever Hood, Die-cast Aluminum, with 4 Pegs, Top Entry, Size 32A «66x40», Pg21 Thread, High Construction, Grey
Component Type	Double Lever Hood
IP Rating	IP66
Product Name	GWconnect
Standard	ANSI/UL 50, ANSI/UL 50 E, CSA C22.2 No.94-1-2, EN 61984
Type	STD
UPC	887191883328

Agency

CSA	256883
UL	E249674

Electrical

Voltage - Maximum	500V
-------------------	------

Physical

Component Size	32A «66x40»
Entry Location	Top
Hood Coating	Polyester Powder
Hood Color	GREY RAL 7037
Lock to Mating Part	Yes
Material - Hood	Die-cast Aluminum
Material - Peg	Stainless Steel
Net Weight	263.000/g
Number of Pegs	4
Packaging Type	Bag
Thread Size	Pg21
Thread Type	(Pg)

Use with Part(s)

Description	Part Number
Use With	Size 32A «66x40» S-A and S-D Inserts

This document was generated on Mar 27, 2025