



Part Number : [936014590](#)

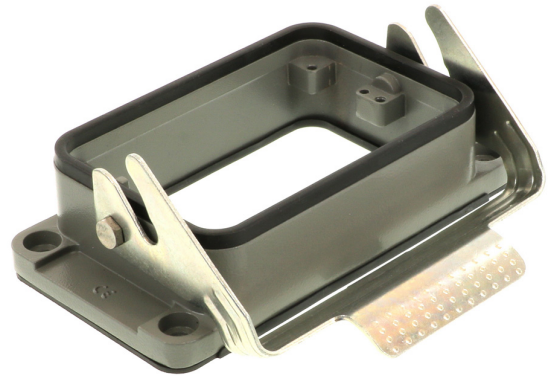
Product Description : GWconnect STD - Standard, Single Lever Bulkhead Mount Housing, Die-cast Aluminum, with 1 Lever, with Gasket, Size 48B «104x62», Grey

Series Number : 93601

Status : Active

Product Category : Heavy-Duty Connectors

Engineering Number : 7848.7440.0



---

## Documents & Resources


### Drawings

[936014590\\_sd.pdf](#)

---

## Product Environment Compliance

### Compliance

GADSL/IMDS	Not Relevant
China RoHS	
EU ELV	Not Relevant
Low-Halogen Status	Low-Halogen per IEC 61249-2-21
REACH SVHC	Not Contained per D(2024)7663-DC (21 Jan 2025)
EU RoHS	Compliant per EU 2015/863

### Multiple Part Product Compliance Statements

- Eu RoHS
- REACH SVHC
- Low-Halogen

### Multiple Part Industry Compliance Documents

- IPC 1752A Class C
- IPC 1752A Class D
- Molex Product Compliance Declaration
- IEC-62474

## Part Details

### General

Status	Active
Category	Heavy-Duty Connectors
Series	93601
Description	GWconnect STD - Standard, Single Lever Bulkhead Mount Housing, Die-cast Aluminum, with 1 Lever, with Gasket, Size 48B «104x62», Grey
Component Type	Single Lever Bulkhead Housing
IP Rating	IP66
Product Name	GWconnect
Standard	ANSI/UL 50, ANSI/UL 50 E, CSA C22.2 No.94-1-2, EN 61984
Type	STD
UPC	887191836645

### Agency

CSA	256883
UL	E249674

### Electrical

Voltage - Maximum	500V
-------------------	------

### Physical

Component Size	48B «104x62»
Housing Coating	Polyester Powder
Housing Color	Grey RAL 7037
Lock to Mating Part	Yes
Material - Gasket	NBR
Material - Housing	Die-cast Aluminum
Material - Lever	Galvanized Steel
Mounting Style	Bulkhead

Net Weight	421.500/g
Number of Levers	1
Packaging Type	Bag
Thread Size	N/A
Thread Type	N/A

---

**Use with Part(s)**

Description	Part Number
Use With	Size 48B «104x62» S-D, S-DD, S-E, S-EE, S-EP, S-ES, S-HSB, S-ESHV, S-K, S-M, and S-EHV Inserts

---

This document was generated on Mar 27, 2025