



**Part Number :** [936040028](#)

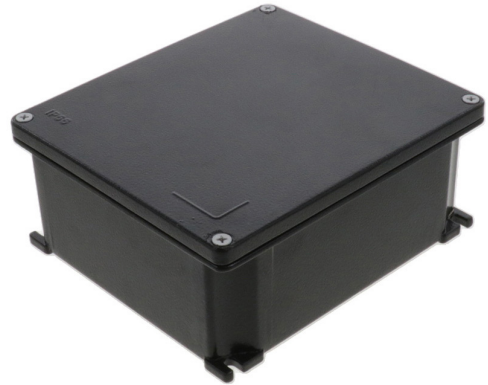
**Product Description :** GWconnect Enclosure, Die-cast Aluminum, S-8000 Series, with External Mounting Flanges, 189 x 167 x 80mm Outside Dimensions, Black RAL 9005

**Series Number :** 93604

**Status :** Active

**Product Category :** Die-cast Enclosures

**Engineering Number :** 8000.6264.1



---

## Product Environment Compliance

### Compliance

GADSL/IMDS	Not Relevant
China RoHS	
EU ELV	Not Relevant
Low-Halogen Status	Low-Halogen per IEC 61249-2-21
REACH SVHC	Not Contained per D(2022)4187-DC (10 June 2022)
EU RoHS	Compliant per EU 2015/863

### Multiple Part Product Compliance Statements

- Eu RoHS
- REACH SVHC
- Low-Halogen

### Multiple Part Industry Compliance Documents

- IPC 1752A Class C
- IPC 1752A Class D
- Molex Product Compliance Declaration
- IEC-62474
- chemSHERPA (xml)

### EU RoHS Certificate of Compliance

---

## Part Details

## General

Status	Active
Category	Die-cast Enclosures
Series	93604
Description	GWconnect Enclosure, Die-cast Aluminum, S-8000 Series, with External Mounting Flanges, 189 x 167 x 80mm Outside Dimensions, Black RAL 9005
IP Rating	IP66, IP69
Product Name	GWconnect
Standard	ANSI/UL 50, ANSI/UL 50 E, CSA C22.2 No.94-1-2, EN 60670-1, EN 62208, EN-60670-22, NMX-J235/1-2
Type	STD
UPC	887191869032

## Physical

Enclosure Coating	Polyester Powder
Enclosure Color	Black RAL 9005
Internal Dimensions	178 x 155 x 74mm
Material - Enclosure	Die-cast Aluminum
Mounting Style	External Flanges
Net Weight	819.500/g
Outside Dimensions	189 x 167 x 80mm
Packaging Type	Carton
Temperature Range - Operating	-40° to +125°C

---

## Use with Part(s)

Description	Part Number
Use With	DIN-rails, mounting supports, fixing screws, metal plates, and ground terminals

---