



Part Number : [936040133](#)

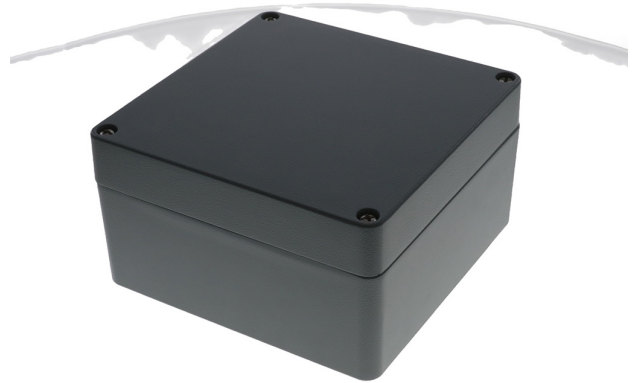
Product Description : GWconnect STD - Standard Enclosure , Die-cast Aluminum, S-8100 Series, without External Mounting Flanges, 180 x 180 x 101mm Outside Dimensions, Grey RAL 7001

Series Number : 93604

Status : Active

Product Category : Die-cast Enclosures

Engineering Number : 8100.8030.0



Documents & Resources

Drawings

[936040133_sd.pdf](#)

Product Environment Compliance

Compliance

GADSL/IMDS	Not Relevant
China RoHS	Not Reviewed per SJ/T 11365-2006
EU ELV	Not Relevant
Low-Halogen Status	Not Reviewed per IEC 61249-2-21
REACH SVHC	Not Contained per D(2023)3788-DC (14 Jun 2023)
EU RoHS	Compliant per EU 2015/863

Multiple Part Product Compliance Statements

- Eu RoHS
- REACH SVHC
- Low-Halogen

Multiple Part Industry Compliance Documents

- IPC 1752A Class C
- IPC 1752A Class D
- Molex Product Compliance Declaration
- IEC-62474

Part Details

General

Status	Active
Category	Die-cast Enclosures
Series	93604
Description	GWconnect STD - Standard Enclosure , Die-cast Aluminum, S-8100 Series, without External Mounting Flanges, 180 x 180 x 101mm Outside Dimensions, Grey RAL 7001
IP Rating	IP66, IP69
Product Name	GWconnect
Standard	ANSI/UL 50, ANSI/UL 50 E, CSA C22.2 No.94-1-2, EN 62208, NEMA ICS5, NEMA250, NMX-J235/1-2
Type	STD
UPC	887191875088

Physical

Enclosure Coating	Polyester Powder
Enclosure Color	Grey RAL 7001
Internal Dimensions	171 X 171 X 92mm
Material - Enclosure	Die-cast Aluminum
Mounting Style	Internal Through Holes
Net Weight	1892.000/g
Outside Dimensions	180 X 180 X 101mm
Packaging Type	Carton
Temperature Range - Operating	-40° to +125°C

Use with Part(s)

Description	Part Number
-------------	-------------

Use With	DIN-rails, mounting supports, fixing screws, metal plates, and ground terminals
----------	---

This document was generated on Mar 27, 2025