



Part Number : [936050039](#)

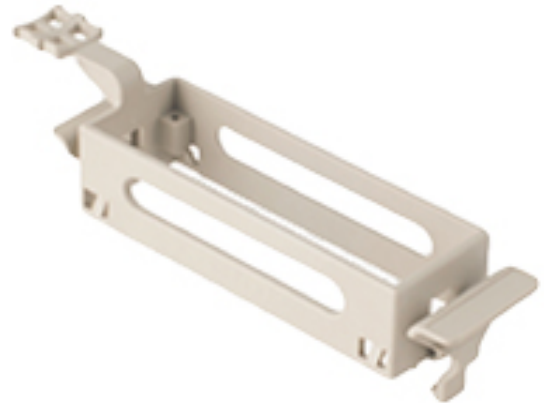
Product Description : GWconnect DIN Rail Top Support for Size 10B «57x27» Inserts, Grey

Series Number : 93605

Status : Active

Product Category : Heavy-Duty Accessories

Engineering Number : 7010.7000.0



---

## Product Environment Compliance

### Compliance

|                    |   |
|--------------------|---|
| GADSL/IMDS         | Not Relevant                                  |
| China RoHS         |   |
| EU ELV             | Not Relevant                                  |
| Low-Halogen Status | Not Reviewed per IEC 61249-2-21               |
| REACH SVHC         | Not Reviewed per D(2024)7663-DC (21 Jan 2025) |
| EU RoHS            | Compliant per EU 2015/863                     |

### Multiple Part Product Compliance Statements

- Eu RoHS
- REACH SVHC
- Low-Halogen

### Multiple Part Industry Compliance Documents

- IPC 1752A Class C
- IPC 1752A Class D
- Molex Product Compliance Declaration
- IEC-62474
- chemSHERPA (xml)

### EU RoHS Certificate of Compliance

---

## Part Details

### General

|        |        |
|--------|--------|
| Status | Active |
|--------|--------|

|              |   |
|--------------|---|
| Category     | Heavy-Duty Accessories  |
| Series       | 93605   |
| Description  | GWconnect DIN Rail Top Support for Size 10B «57x27» Inserts, Grey |
| Product Name | GWconnect   |
| UPC          | 887191890616  |

## Physical

|                     |                  |
|---------------------|------------------|
| Accessory Type      | DIN Rail Support |
| Color - Resin       | Grey RAL 7044    |
| Material - DIN Rail | Polycarbonate    |
| Net Weight          | 31.000/g         |
| Packaging Type      | Bag              |

---

## Use with Part(s)

|             |                          |
|-------------|--------------------------|
| Description | Part Number              |
| Use With    | Size 10B «57x27» Inserts |

---