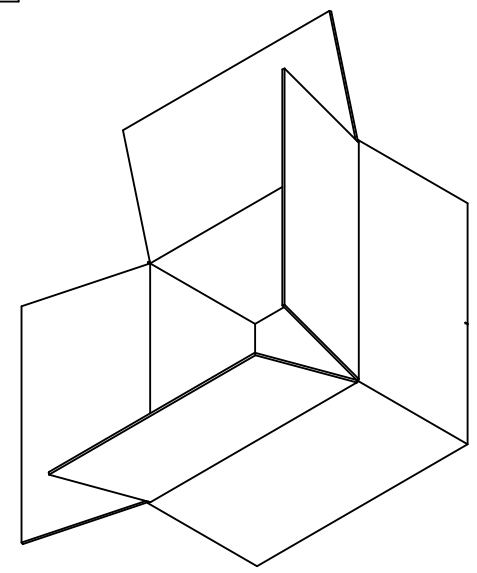
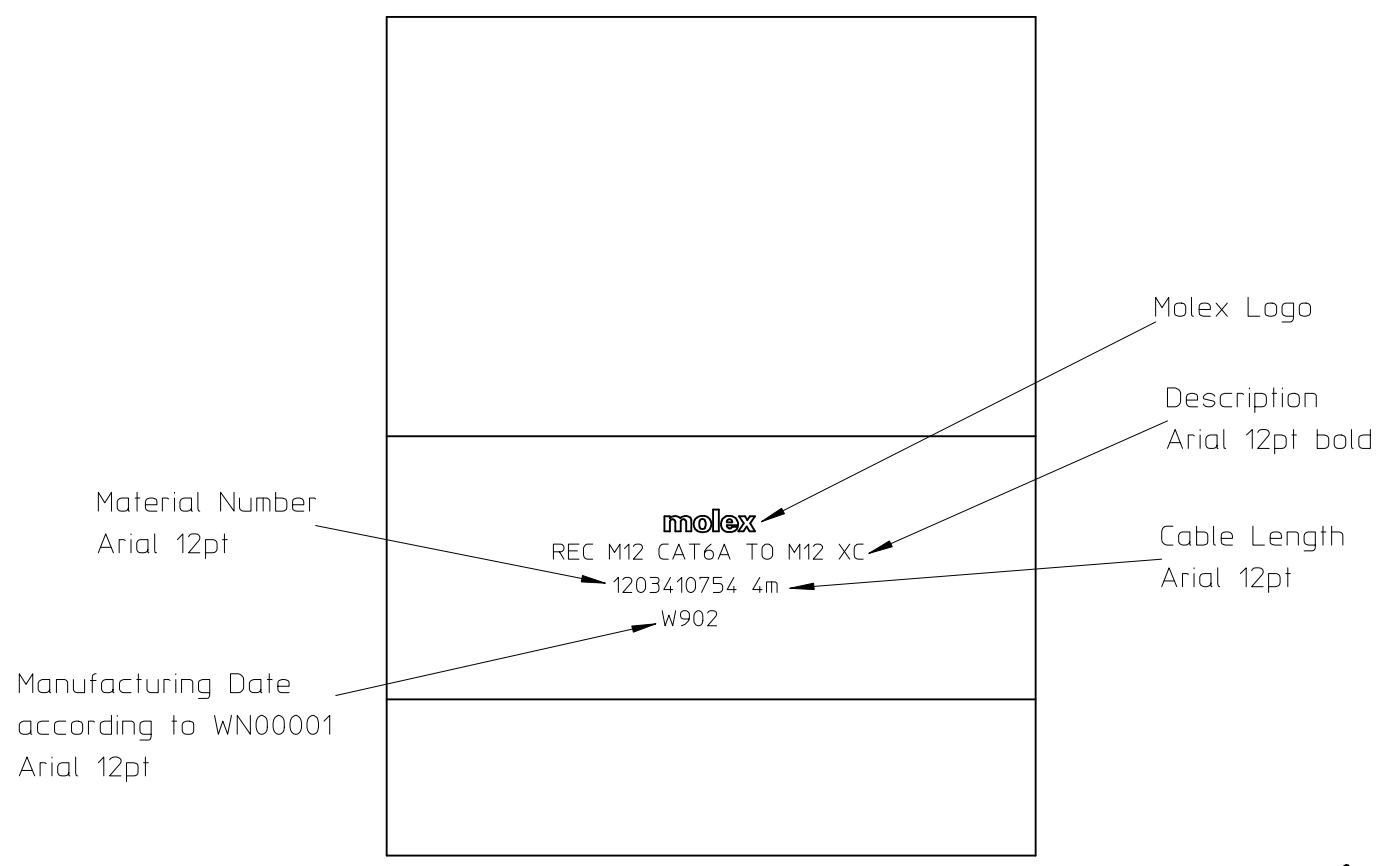


NOTES:  
 CORDSETS TO BE PACKED INTO PLASTIC BAGS.  
 THE BAGS ARE WELDED OR CLIPPED.  
 AFTER THE BAGS ARE PILED FOR SHIPMENT INTO  
 CARTON 096708005.

Bemerkungen:  
 Cordset wird in eine Plastiktüte verpackt  
 und verschweißt / geklippt.  
 Danach die Plastiktüten werden für Versand in  
 einem Karton 0967080005 verpackt.

Material Number Material Nummer	length Länge	Qty. of bags per carton Menge pro Karton
1203410700	0,5	150
1203410701	1	120
1203410702	2	100
1203410703	3	50
1203410704	4	40
1203410705	5	30
1203410706	10	20
1203410707	15	15

PRINT OF THE BAG:  
 Beschriftung der Tüte:



ENTER DESCRIPTION EC NO: IPG2015-1505 DRWN: ZISMAYILOV 2015/02/24 CHKD: RSCHIEBER 2015/02/24 APPR: RSILLER 2015/02/25	QUALITY SYMBOLS ▼=0 □=0	GENERAL TOLERANCES (UNLESS SPECIFIED)		DIMENSION STYLE MM ONLY		SCALE	DESIGN UNITS METRIC	THIRD ANGLE PROJECTION		
			mm	INCH	DRAWN BY	DATE	TITLE			
		4 PLACES	± ---	± ---	ZISMAYILOV	2015/02/24	PACKAGING CORDSET REC M12 CAT6A TO M12 XC			
		3 PLACES	± ---	± ---	CHECKED BY	DATE				
2 PLACES	± 0.05	± ---	RSCHIEBER	2015/02/24	molex					
1 PLACE	± 0.10	± ---	APPROVED BY	DATE						
0 PLACE	± ---	± ---	RSILLER	2015/02/25	MATERIAL NO.		DOCUMENT NO.		SHEET NO.	
DRAFT WHERE APPLICABLE MUST REMAIN WITHIN DIMENSIONS			SEE TABLE		PK-120341-210		1 OF 1			
				SIZE A3	THIS DRAWING CONTAINS INFORMATION THAT IS PROPRIETARY TO MOLEX INCORPORATED AND SHOULD NOT BE USED WITHOUT WRITTEN PERMISSION					